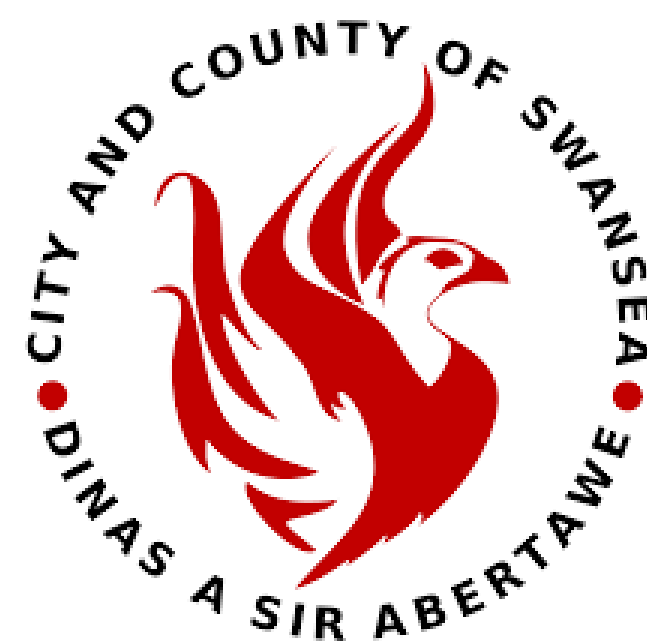




National Autistic Society

Swansea Branch  
Cangen Abertawe



4 week programme designed for families on the pathway or those who have recently received an ASD diagnosis

Week 1: NAS Understanding Autism

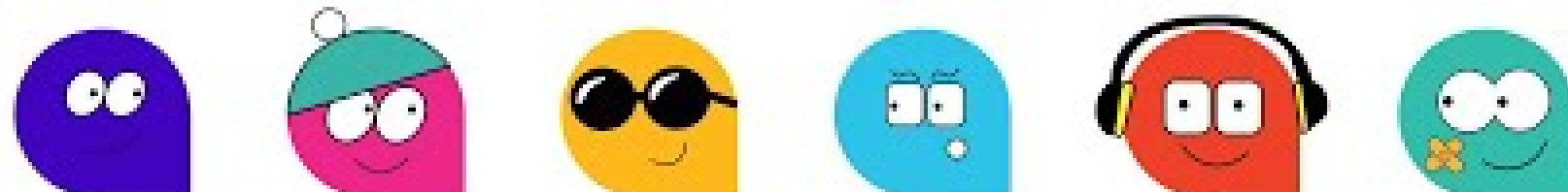
Week 2: Education

Week 3: Occupational Therapy & Speech and Language Therapy

Week 4: Caring for yourself & Signposting

CONTACT US

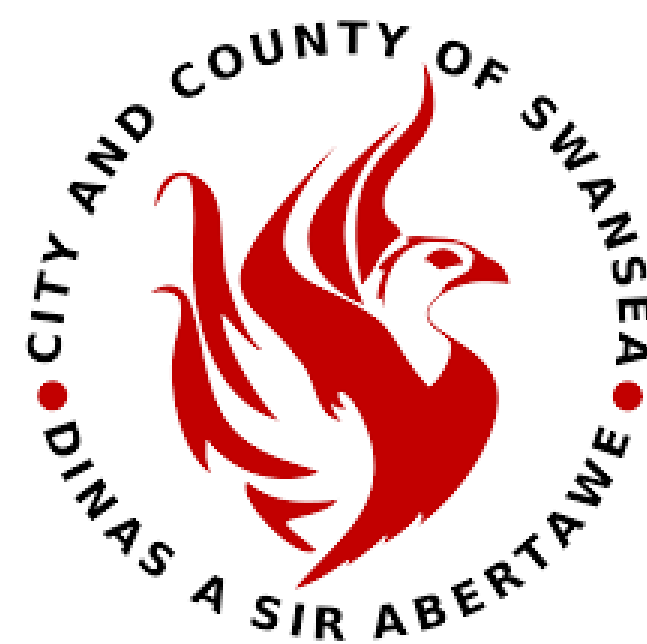
[swansea.branch@nas.org.uk](mailto:swansea.branch@nas.org.uk)





National Autistic Society

Swansea Branch  
Cangen Abertawe



ALNCo's and Parent/Carers themselves can refer into this programme by emailing the branch.

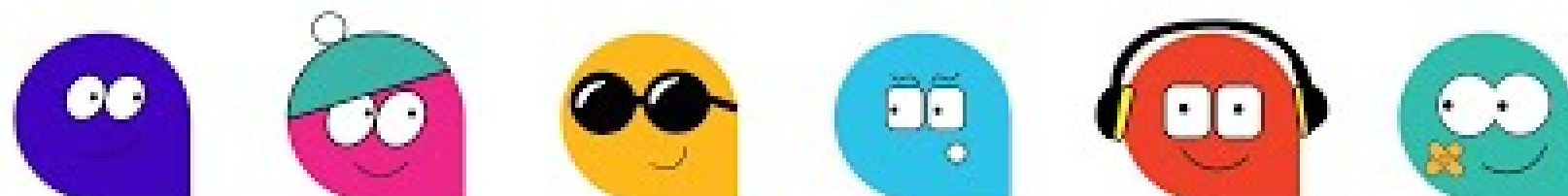
The sessions are delivered over 4 weeks and each will last around 2-3 hours each.

The sessions will be delivered via Zoom.

**PLEASE get parental consent before sending contact details for families.**

CONTACT US

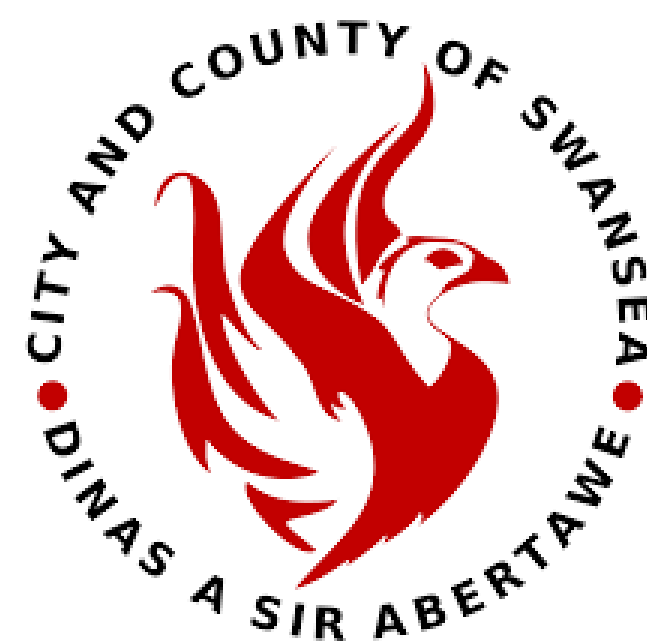
[swansea.branch@nas.org.uk](mailto:swansea.branch@nas.org.uk)





National Autistic Society

Swansea Branch  
Cangen Abertawe



## Dates:

21st Jan, 28th Jan, 4th Feb & 11th  
Feb - 10am start

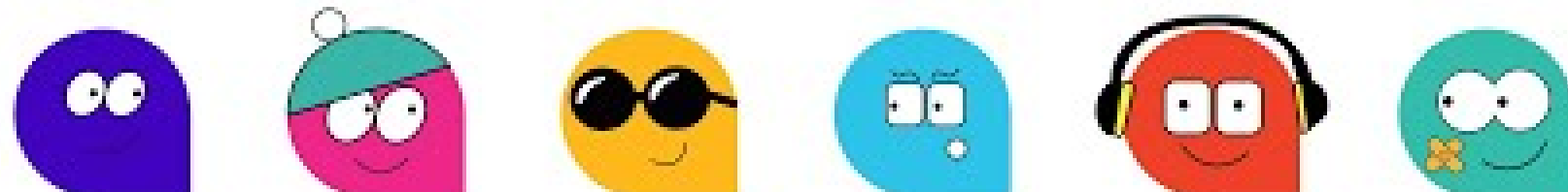
11th Mar, 18th Mar, 25th Mar & 1st  
Apr - 10am start

6th May, 13th May, 20th May & 27th  
May - 10am start

17th Jun, 24th Jun, 1st Jul & 8th  
Jul - 10am start

CONTACT US

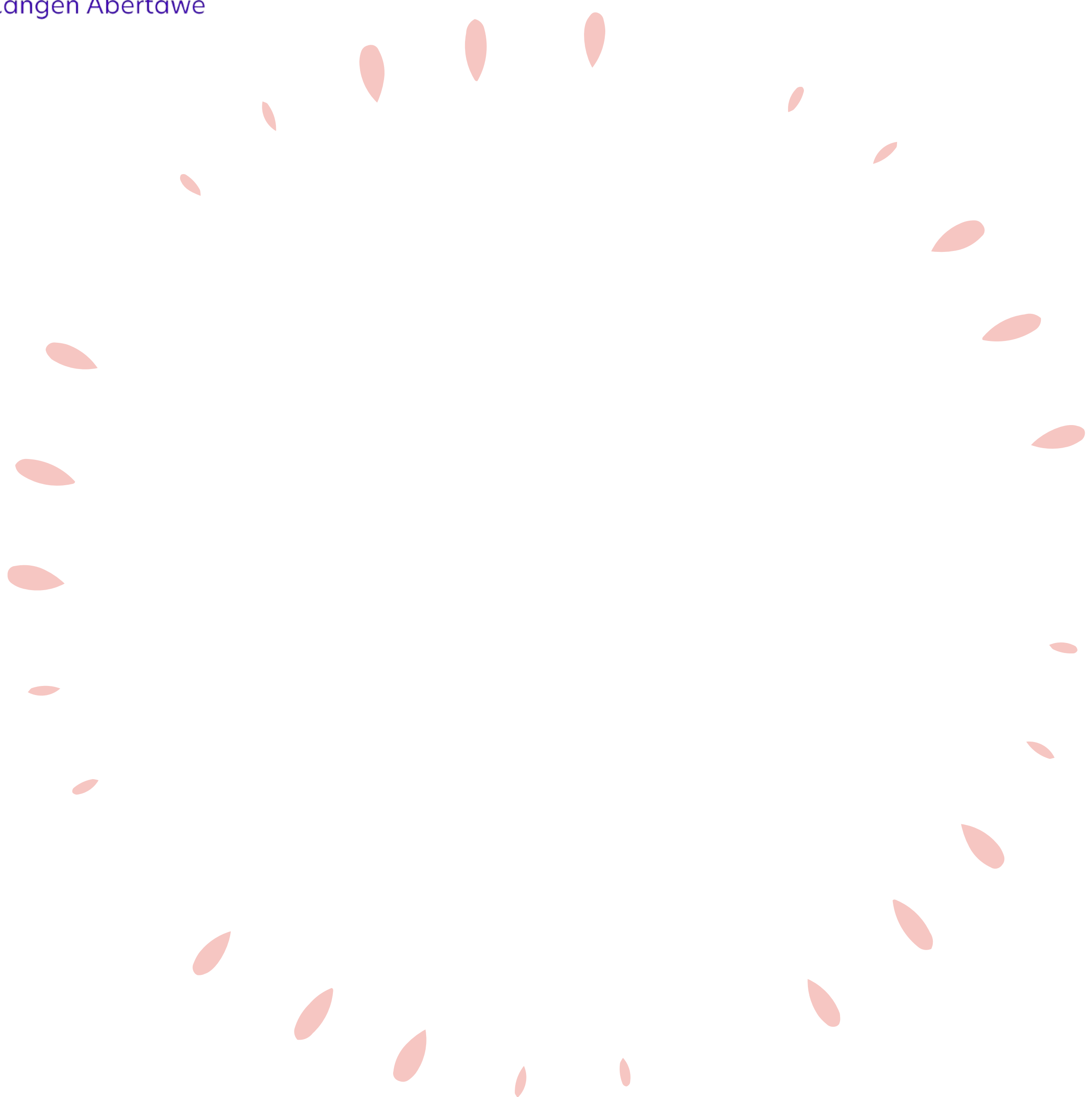
[swansea.branch@nas.org.uk](mailto:swansea.branch@nas.org.uk)





National Autistic Society

Swansea Branch  
Cangen Abertawe



CONTACT US

[swansea.branch@nas.org.uk](mailto:swansea.branch@nas.org.uk)

