

Ysgol Gyfun

PENYRHEOL

Comprehensive School



BELONG
PARCHU

THRIVE
DYHEU

ASPIRE
FFYNNU

RESPECT
PERTHYN

School Prospectus

2023 / 2024

Contents

Headteacher’s Welcome	Page 3
About the School	Page 4
Important Information	Page 5
Charging and Remissions Policy	Page 6
Curriculum	Page 8
Additional Learning Needs Provision	Page 12
Pastoral Care Arrangements	Page 14
Arrangements for Religious Education and Collective Worship	Page 16
Relationships and Sexuality Education	Page 16
Use of the Welsh Language	Page 17
Sporting Activities	Page 18
Extracurricular activities	Page 20
School Values and Aims	Page 24
Careers Advice and Guidance	Page 26
Security, Health and Safety	Page 26
Equal Opportunities Policy	Page 27
Admissions Policy	Page 28
School Policy on Discipline	Page 30
Rewards	Page 32
Attendance	Page 34
Summary of School Performance	Page 36
GCSE Results of Year 11 Pupils	Page 37
School Uniform	Page 38

Welcome to Penyrheol

Dear Parent/Carer,

On behalf of all the pupils, staff and Governors, it is my privilege to welcome you to Penyrheol Comprehensive School. It gives me great pleasure to present you with the Penyrheol School Prospectus.

We appreciate that moving to secondary school can be one of the biggest challenges that takes place in a child's school life, but we hope to make it the most exciting. It is our hope that this Prospectus provides our prospective pupils and their parents/carers with lots of additional information, and will answer many of the questions you may have of our school.

We hope that by now you are beginning to build up a picture of Penyrheol Comprehensive School and the opportunities that the school can offer your child. Our emphasis on academic achievements, aspiration, standards, attitude to learning and positive behaviour should meet with your approval. We have high expectations of all of our learners. Just as important as this is the fact that Penyrheol is a caring, nurturing and inclusive school. At Penyrheol, our four Core Values are Respect, Aspire, Thrive and Belong. These Core Values reflect who we are at Penyrheol and what we are all about.

We are proud to be a part of the community we serve and believe firmly in the importance of a close working relationship between school and home. We do our utmost to encourage new pupils and parents/carers to feel welcome. We want you and your child to feel like they belong at Penyrheol.

We look forward to welcoming your child into the Penyrheol family and we look forward to working in partnership with you over the next five years. Working together, we are always stronger.

Yours faithfully,



Damian Benney

Headteacher

About the School

Penyrheol Comprehensive School was established in 1973. It is a mixed English-medium 11-16 Comprehensive School that serves the communities of Gorseinon, Loughor, Penyrheol, Kingsbridge and Garden Village. The school liaises closely with five partner primary schools to ensure smooth transition from one phase to the next. At sixteen the majority of pupils continue their education at Gower College with which the school has an excellent working relationship.

The school was last inspected in October 2018. The school was awarded 'Good' for all aspects of its practice and provision. Inspectors commented: 'Penyrheol Comprehensive School is a fully inclusive school that supports its pupils well. Support and guidance for pupils with additional learning needs is strong and has contributed to the standards they achieve. Most pupils behave well in lessons. They are proud of their school and are courteous towards their teachers, peers and visitors. Many pupils make suitable progress in lessons. The quality of teaching and learning experiences provided by the school has had a positive impact on outcomes for pupils at the end of key stage 4.'

Examination results are not the only measure of a successful school. At Penyrheol pupils 'enjoy their life at school and appreciate the strong relationships they have with staff and their peers. Nearly all feel safe, included and valued.' Pupils from Penyrheol do well both locally and nationally in areas as diverse as mountain biking and public speaking. They achieve individual and team honours in sporting activities; they can act, sing, dance and win competitions for their artistic talent. They also care for those less fortunate than themselves and regularly raise considerable sums of money for charity.

Penyrheol is a genuine comprehensive school in that it has pupils of all attainment levels and backgrounds. It is very much a part of the community that it serves. There is a considerable amount of new housing being built in the locality, because the area is a pleasant one.

In September 2009 a new school building was opened at Penyrheol to replace the two-thirds of the school that was destroyed by fire in March 2006. The new building provides excellent facilities for all our specialist subjects and is an environment that promotes good teaching and learning.

Penyrheol seeks to be a happy, caring community in which all who work are valued, supported and treated with respect and tolerance. In so seeking, we hope everyone will be motivated to achieve their full potential and strive for the highest standards of teaching, learning and behaviour.

Ceisio Penyrheol fod yn gymuned hapus a gofalgar, lle caiff pawb sy'n gweithio ynddi eu gwerthfawrogi, eu cefnogi a'u trin â pharch a goddefgarwch. Yn hyn o beth, gobeithiwn y bydd pawb yn cyrraedd eu llawn botensial ac yn ymdrechu i gyrraedd y safonau uchaf o ddysgu, addysgu ac ymddygiad.

Important Information

Contact Details

Penyrheol Comprehensive School, Pontarddulais Road, Gorseinon, Swansea, SA4 4FG
01792 533066

Headteacher: Mr. D. Benney
Chair of Governors: Mr. J. Bowen

Term Dates 2023 - 24

Term	Term begins		Mid-term holiday begins	Mid-term holiday ends		Terms ends	Total days
Autumn 2023	Friday 1 September	Friday 27 October	Monday 30 October	Friday 3 November	Monday 6 November	Friday 22 December	76
Spring 2024	Monday 8 January	Friday 9 February	Monday 12 February	Friday 16 February	Monday 19 February	Friday 22 March	50
Summer 2024	Monday 8 April	Friday 24 May	Monday 27 May	Friday 31 May	Monday 3 June	Friday 19 July	69
Total							195

Bank holidays

29 March 2024 - Good Friday
1 April 2024 - Easter Monday
6 May 2024 - May Day
27 May 2024 - Spring Bank Holiday

The School Day

8.40 am - 9.00 am Registration
9.00 am - 10.00 am Lesson 1
10.00 am - 11.00 am Lesson 2
11.00 am - 11.20 am Break
11.20 am - 12.20 pm Lesson 3
12.20 pm - 1.20 pm Lesson 4
1.20 pm - 2.00 pm Lunch
2.00 pm - 3.00 pm Lesson 5

Charging and Remissions Policy

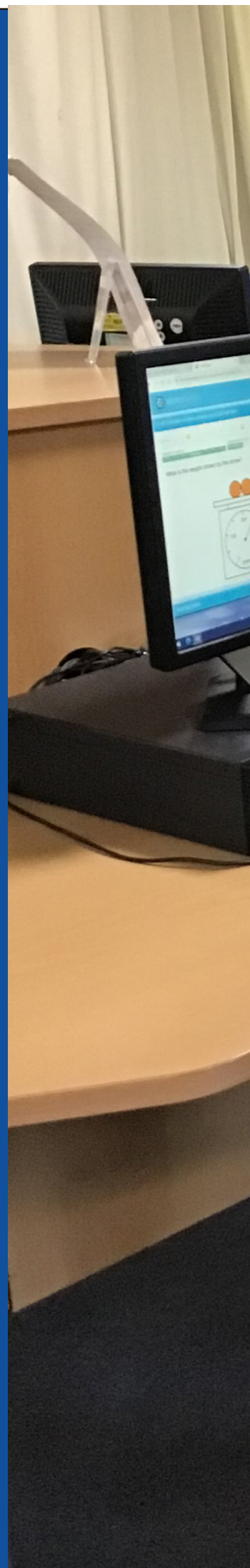
The Education Reform Act of 1988 ensured that the vast majority of activities in school are free from any charge. The Local Authority and the schools policy clearly follow the guidelines laid down by this Act.

The range of activities that we can charge for in school time is therefore strictly limited. When we are allowed to invite contributions we make it clear to all parents that such contributions are voluntary.

We charge a termly amount for pupils who choose to receive additional music tuition in small groups. The purpose of this charge is to enhance the range of types of music tuition that we are able to offer.

Out of school time activities are not generally subject to the same regulations, and we can of course, charge for these. All activities the school organises will have an educational content – be that academic or recreational. We consider it vital that our pupils have the opportunity to participate in such activities. It is a sad fact that without financial support many of these activities cannot go ahead, and we have always appreciated that parents have realised this, and have willingly contributed.

We will always be sensitive to the needs of particular pupils and families. We do not want any pupil to miss out on educational experiences because they are unaffordable. If you want your child to attend an event but can't afford it, please contact the school to discuss this matter.





Curriculum

Key Stage 3 (Years 7, 8, and 9)

In September 2021, it was decided that the curriculum which would best suit our pupils in Penyrheol would be a progression curriculum – one where pupils' journey through school is designed for progress. Subject leaders consciously construct their curriculum and where content is placed in the curriculum is saying something about its importance.

Each unit of work depends upon what has been taught previously and will impact on those units about to be taught.

Consequently, each unit of work is broken down into manageable steps and pupils' knowledge and understanding is closely monitored as they learn. Planning for progress in this way ensures that pupils are constantly challenged, and provides more of an opportunity for the mastery of the deep structures of each subject.

This decision was arrived at after considerable research of different curriculum models, current thinking and the demands of the new Curriculum for Wales. Our curriculum, therefore, satisfies the mandatory and statutory elements of the Curriculum for Wales.

In this academic year (2023-2024) all departments are reviewing the Year 7 and Year 8 curricula and working on the detailed schemes of work (and

resources) for Year 9. We are also working very closely with our primary schools to ensure that there is definite progression and smooth transition from primary to secondary school.

Curriculum subjects at Key Stage 3:

- English, Welsh and French/
Spanish
- Mathematics
- Science, Design Technology, ICT
- History, Geography, RVE
- Art, Music and Drama
- PE
- Personal Social and Health
Education

During Year 9, pupils are offered a range of optional subjects which they will then study during their remaining two years of school (Years 10 and 11). Parents/carers and pupils have always been involved in this process of choice. We encourage pupils to negotiate their own curriculum, while at the same time trying to ensure that all pupils maintain breadth and balance in their courses. Clearly the National Curriculum dictates some of the subjects that pupils must study. Nevertheless, as a school we will always try to ensure some degree of negotiation, and involve both parents/carers and pupils in the process.



Curriculum in Years 10 and 11

All pupils must continue to study the core subjects of:

- English (and most also take English Literature)
- Mathematics and Numeracy
- Science

Our optional subjects include:

- Art/Photography
- BTEC Public Services
- BTEC Hair & Beauty
- BTEC Sport
- BTEC Business Studies
- Computer Science
- Constructing the Built Environment
- Digital Technology
- Drama
- Fashion and Textiles
- Food and Nutrition
- French
- Geography
- Health & Social Care, and Childcare
- History
- Media Studies
- Music
- Physical Education Studies
- Religious Studies
- Product Design
- Sociology
- Spanish
- Triple Science

Whilst the majority of pupils follow GCSE or BTEC courses, a small number follow courses at entry level.

Courses in Personal, Social and Health Education, Physical Education and Welsh are taken by all pupils in Years 10 and 11. All pupils will study the Welsh Baccalaureate Qualification, and elements of Religion, Value and Ethics are covered within the qualification.





Additional Learning Needs Provision

The Governing Body has approved a policy which sets out the way in which pupils with Additional Learning Needs are catered for in Penyrheol. This policy recognises the worth of each child as an individual, that the needs of individuals will differ, and that the school must make every attempt to ensure that those needs are successfully met. Copies of the full document can be obtained from Mrs. V. U. Jeffreys (Clerk to the Governors).

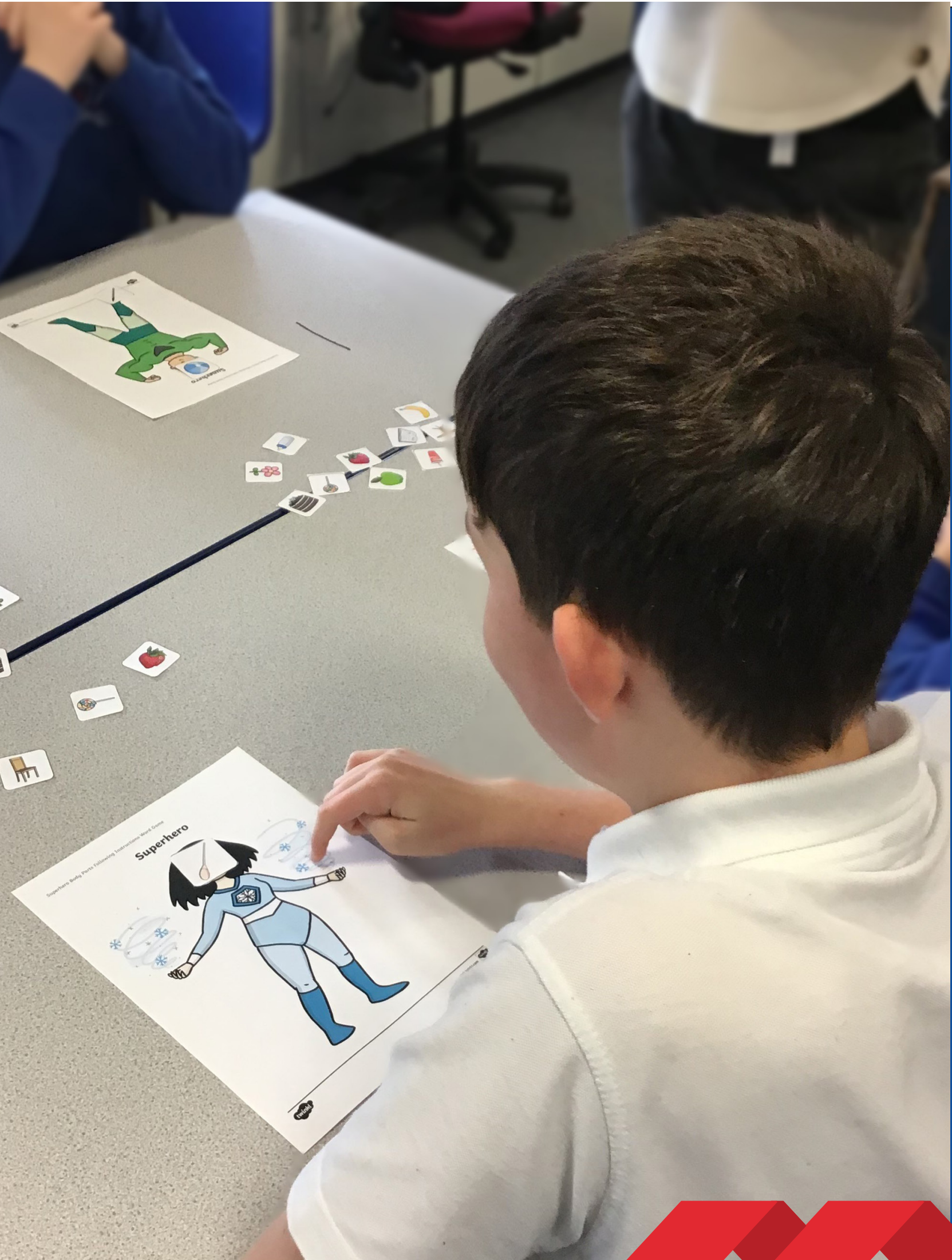
In recognising both the continuum of need and the entitlement of pupils, the Learning Support Department requires and has, a degree of flexibility with regard to staffing, timetabling and access to facilities.

At Penyrheol Comprehensive the vast majority of pupils' needs are suitably and successfully met within the mainstream setting, taught by mainstream staff, supported by differentiated material and, where necessary, by Teaching Assistants. The school recognises that all staff are teachers of pupils with Additional Learning Needs and that any pupil can have an Additional Learning Need at some time in their school career.

For a small number of pupils whose needs can be quite significant, it is felt to be in their best interest for them to be educated in a far more individual manner involving some degree of withdrawal from mainstream lessons. These decisions are never taken lightly and full consultations take place between the ALNCO, the parents/carers and where appropriate, the schools Educational Psychologist.

The school also has a small Specialist Teaching Facility for pupils with moderate to severe learning difficulties. The pupils in the STF spend their time in the facility and in mainstream lessons supported by Teaching Assistants. Plans are made on an individual basis.





Pastoral Care Arrangements

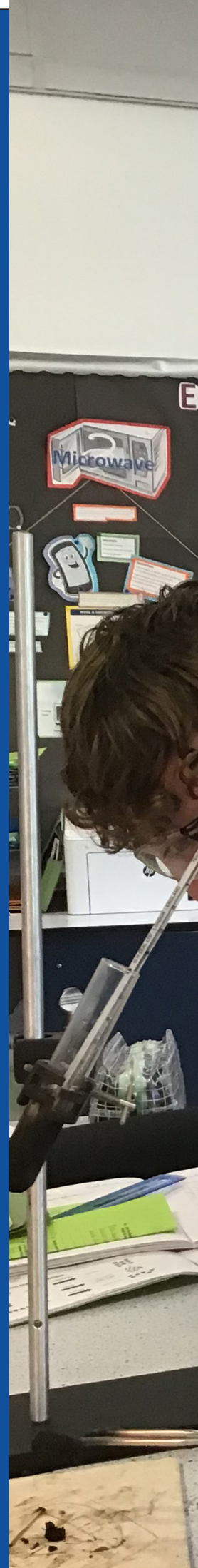
The school is organised on a year basis with a Head of Year in charge of each year group. They are supported by a Pastoral Support Officer. Heads of Year have full delegated responsibility for their year group – for their attendance, uniform, behaviour, discipline, welfare and academic progress. Form Tutors assist them in this role, providing a secure, caring base for pupils in their forms and encouraging a positive, co-operative atmosphere. This enables pupils to develop the confidence and stability necessary to gain the maximum benefit from the schools curriculum.

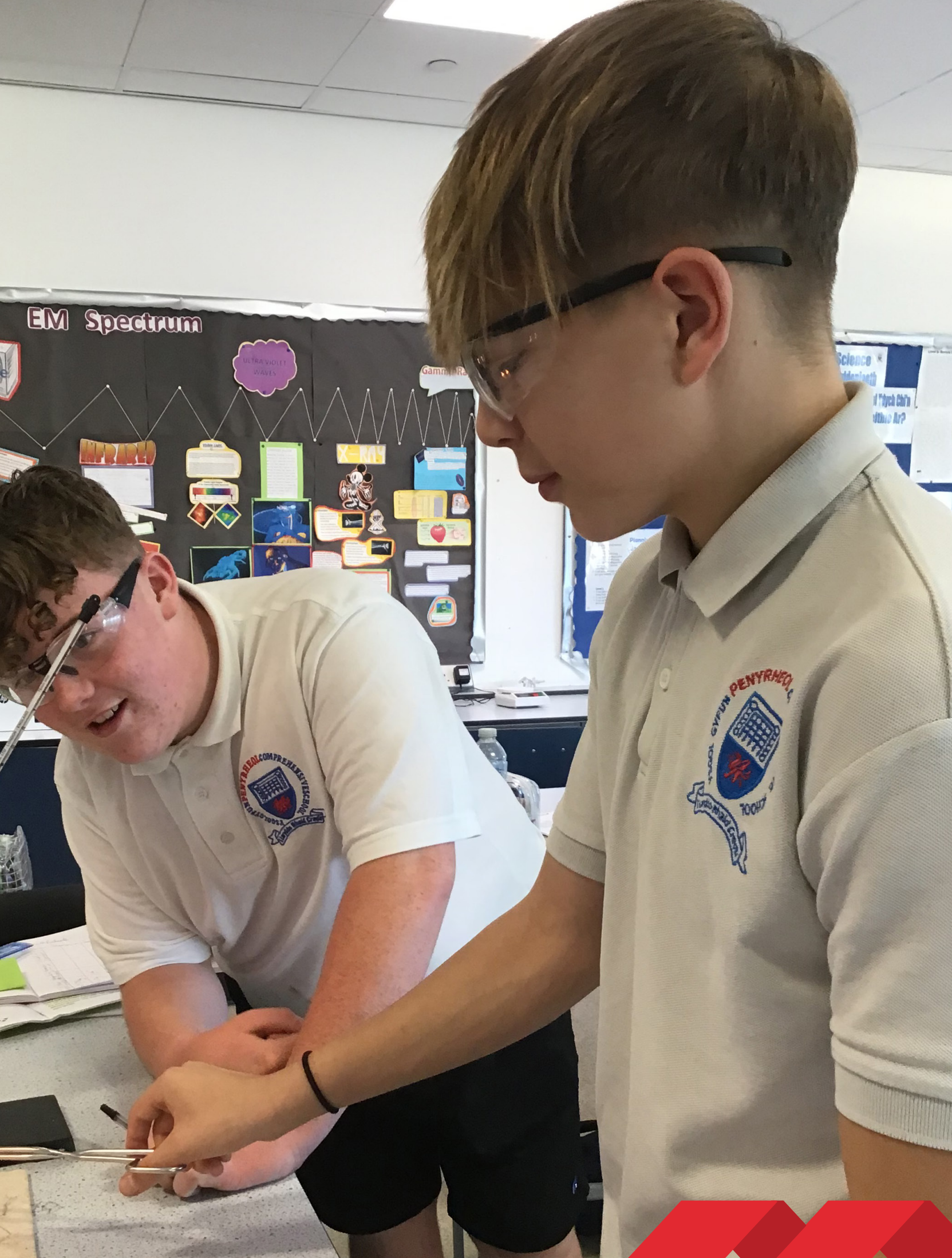
Good working relationships are also encouraged within the year group. The Head of Year, Pastoral Support Officer and Form Tutor will offer help and support with personal and general problems, and also encourage all pupils to aim for standards and attitudes expected by the school regarding academic work, behaviour, punctuality, politeness, uniform, appearance and the safety and security of personal possessions.

The caring responsibility which each Form Tutor has is reinforced by the specific, well-defined Personal, Social and Health Education programme which is followed by pupils throughout the school.

For certain competitive events, such as the Eisteddfod and Sports Day, pupils are organised in cross-age Houses. The Houses are called Tân (Fire), Tir (Earth), Dŵr (Water) and Gwynt (Wind).

Year 6 pupils from our partner primary schools will spend two whole days at Penyrheol during the Summer Term preceding their arrival in September. All Year 7 pupils follow an induction programme designed to help them settle in, and there is a special Year 7 Parents Evening with form tutors before the October Term so that parents/carers can be informed of how their child has settled.





Arrangements for Religious Education and Collective Worship

Religion, Values and Ethics is a compulsory element of the curriculum throughout the school.

In the context of RVE, spiritual development is concerned with our natural ability to look for, express and understand what is important in life, and to question who we are and why we are here. Spiritual development may or may not involve religion.

At Penyrheol, our learners:

- develop a sense of their uniqueness and value;
- reflect upon their own beliefs, values and actions and express and justify their own feelings and opinions;
- show empathy and consideration for others;
- develop a voice and listen with respect to the voices of others;
- explore how religious and non-religious worldviews impact on the lives of individuals, the local community and wider society.

There is a daily act of worship or a daily opportunity for spiritual reflection for all pupils. This is fulfilled through weekly assemblies led by Senior Leaders and also the Head of Year. Form tutors fulfil this role during morning registration. Pupils may be withdrawn from this at the written request of parents/carers.

Relationships and Sexuality Education

Our school curriculum embraces the Relationships and Sexuality Education Code. Through our health and well-being programme of learning, as well as in subject areas across the curriculum, we provide the help and guidance that our learners need to understand and care for their personal health and safety. Through a carefully planned, sensitive and developmentally appropriate programme of learning, we ensure that learners develop the understanding and behaviours that will support them to develop and maintain healthy, safe and fulfilling relationships throughout their lives. This includes fostering an understanding of sexual health and the bearing that this has on well-being.

We also support our learners in realising their rights to safety and protection and freedom from harm and discrimination. We provide information about where to find help and support, and also encourage our pupils to support and advocate for the rights and fair treatment of others.

We make certain that all learning is inclusive and reflects the diversity that exists in our school, wider community and the world.

In accordance with Welsh Government Legislation, there is no right to withdraw from RSE.

Use of the Welsh Language

The primary language of instruction and communication in the school is English. Although Welsh is taught as a second language only, it is a compulsory subject for all pupils throughout their five years at Penyrheol.

The majority of pupils undertake Full Course GCSE Welsh at Key Stage 4. A small number of pupils undertake a Welsh Pathways Qualification or our new Agored Cymru Welsh qualification instead. Pupils that move to Wales during Key stage 4 are exempt from studying Welsh and are given independent study lessons instead.

We are proud of our Welsh culture and seek to recognise this in as many ways as possible. The new CfW has meant that we can promote the importance of Welsh heritage and identity consistently throughout our teaching. All pupils are aware of their history and culture from Year 7 onwards and emphasis is placed on Wales as a country as well as the Welsh language; it's traditions, people, successes and key events are celebrated. This awareness is further promoted by their participation in the school's annual Eisteddfod, trips to Llangrannog / Glan Llyn and our Diwrnod Shw Mae event where Year 7 pupils are engaged in cultural and language activities.

Recommendation 3 from our Estyn inspection in 2018 was to 'improve provision to develop pupils' Welsh language skills in situations other than Welsh lessons'. As a result of this we are in the process of introducing the Siarter Iaith (Language Charter), a whole-school initiative to develop Welsh language and culture across the curriculum. A Criw Cymraeg and a Clwb Cymraeg is also underway.

Staff and pupils have always been encouraged to use Welsh in an informal way and in all lessons, apart from International Languages and Learning Support. Pupils are asked to record information such as the date and classwork, and respond to the register in Welsh. A bank of useful Welsh phrases has been introduced to encourage all staff to use them both in the classroom and around school. "Bore da" is usually heard more often than "good morning" and the informal use of Welsh is reinforced by the school's Welsh phrase of the week. Already we are hearing more Welsh being spoken. There is also a weekly Welsh update on the TV screen in the foyer.

Sporting Activities

The school enjoys extensive sporting facilities, including rugby, soccer and hockey pitches, multi-purpose courts and an all-weather 3G pitch. This provision is further enhanced by the community link which makes available, for the school, a swimming pool (housed in a separate building), a sports hall, gymnasium and multi-gym.

We recognise the importance of encouraging participation in sporting activities to the development of positive mental health and wellbeing. Our aim is to ensure that our pupils benefit from the facilities we enjoy and develop as healthy, confident individuals. We want all pupils to be involved in Physical Education lessons and as many as possible to take an active part in the sporting teams that represent the school in many different disciplines.

Inter-school matches are usually played on a weekly basis. These include football, rugby and netball, as well as cross country, athletics and gymnastics tournaments. Following the years of Covid disruption, we have organised a Florida tour in April 2024.





Extracurricular Activities

Our regular curriculum is supported by a wide and varied extracurricular offer which encourages pupils to explore their existing interests and develop new ones.

Full use is made of the community facilities (Leisure Centre and Swimming Pool) in the arts, music and recreational fields. Physical activities positively thrive – as well as the usual team games of rugby, hockey, soccer, netball, cricket, basketball, athletics and gymnastics there are opportunities to try out a range of other sporting activities.

Various clubs and societies meet in the lunch hour or after school. The wide variety of activities available to our pupils. Please see all club information on the following page.

Extracurricular PE - When fixtures are scheduled for a particular evening, the club is cancelled. Where possible, we try to organise our fixtures so that the age groups play on their respective training night.

Other events, trips and visits

Drama

We have a thriving Drama Department which puts on first class productions. This year's production was "The Sound of Music" and involved over 60 pupils who worked on lighting, sound, staging and prompting, as well as singing and dancing. The production takes place over four evenings and is very well attended by the local and wider community. There is also a matinee performance for our partner primary schools.

Geography

- Early October - Year 11- Fieldwork – 3 Lessons – (3-5)
- March – Bristol Zoo/Rainforest - Year 10 (with the Art department)
- March – Year 11- Fieldwork – 3 lessons – (3-5)
- March/April – Year 9 Visit – all day
- April – Year 7 - Geography lesson and 1 Gorseinon
- June (after exams) – Year 10 Fieldwork
- July (early) – Year 8 Brecon/Gower – All day

Welsh

The Welsh Department took Year 7 and 8 pupils to Llangrannog in March 2023.

Learning Resource Centre

Our Learning Resource Centre/Library is open to pupils from 8.30 a.m. to 4.00 p.m. daily. There is a staffed Study Club each day, 3-4 p.m.





	Year 7	Year 8	Year 9
Monday			
Registration	Keyboard Ensemble	Keyboard Ensemble	Keyboard Ensemble
Lunchtime	STF Safe Space Film Club String Group	STF Safe Space Film Club String Group	STF Safe Space String Group
After school	Homework Club School Production (Sept - Oct) Orchestra Badminton Club	Homework Club School Production (Sept - Oct) Orchestra Badminton Club	Homework Club School Production (Sept - Oct) Orchestra Badminton Club
Tuesday			
Registration	Reading Buddies	-	-
Lunchtime	Book Club (last Tues of each half term) STF Safe Space Art Club Boys Rugby	Book Club (last Tues of each half term) STF Safe Space Art Club Boys Rugby	Book Club (last Tues of each half term) STF Safe Space Art Club Boys Rugby
After school	Homework Club School Production (Sept - Oct) Art Club Girls Football	Homework Club School Production (Sept - Oct) Art Club Girls Football	Homework Club School Production (Sept - Oct) Art Club Girls Football
Wednesday			
Registration	-	-	-
Lunchtime	STF Safe Space Art Club ICT Club Boys Football/Rugby	STF Safe Space Art Club ICT Club Boys Football/Rugby	STF Safe Space Art Club ICT Club Boys Football/Rugby
After school	Homework Club School Production (Sept - Oct) Craft Club Energy Council (week 1)	Homework Club School Production (Sept - Oct) Craft Club Energy Council (week 1)	Homework Club School Production (Sept - Oct) Craft Club Energy Council (week 1) Netball Training
Thursday			
Registration	Reading Buddies Rock Group Woodwind Group	Rock Group Woodwind Group	Rock Group Woodwind Group
Lunchtime	STF Safe Space Chamber Choir Boys Football/Rugby	STF Safe Space Chamber Choir Boys Football/Rugby	STF Safe Space Chamber Choir Boys Football/Rugby
After school	Homework Club School Production (Sept - Oct)	Homework Club School Production (Sept - Oct)	Homework Club School Production (Sept - Oct)
Friday			
Registration	Junior Choir	Junior Choir	Junior Choir
Lunchtime	STF Safe Space	STF Safe Space	STF Safe Space
After school	Homework Club School Production (Sept - Oct) Netball Training	Homework Club School Production (Sept - Oct) Netball Training	Homework Club School Production (Sept - Oct)

	Year 10	Year 11
Monday		
Registration	Senior Choir Keyboard Ensemble	Senior Choir Keyboard Ensemble
Lunchtime	STF Safe Space String Group	STF Safe Space String Group
After school	Homework Club School Production (Sept - Oct) Orchestra Badminton Club	Homework Club School Production (Sept - Oct) Orchestra Badminton Club
Tuesday		
Registration	Ensemble (music)	Reading Buddies Music Performance Platform
Lunchtime	Book Club (last Tues of each half term) STF Safe Space Art Club Boys Rugby	Book Club (last Tues of each half term) STF Safe Space Art Club Boys Rugby
After school	Homework Club School Production (Sept - Oct) Art Club ICT Catch Up Girls Football	Homework Club School Production (Sept - Oct) Art Club ICT Catch Up Girls Football
Wednesday		
Registration	-	-
Lunchtime	STF Safe Space Art Club ICT Club Boys Football/Rugby	STF Safe Space Art Club ICT Club Boys Football/Rugby
After school	Homework Club School Production (Sept - Oct) Craft Club Energy Council (week 1) ICT Catch Up Netball Training	Homework Club School Production (Sept - Oct) Craft Club Energy Council (week 1) ICT Catch Up Netball Training
Thursday		
Registration	Rock Group Woodwind Group	Reading Buddies Rock Group Woodwind Group
Lunchtime	STF Safe Space Art Club Chamber Choir Boys Football/Rugby	STF Safe Space Art Club Chamber Choir Boys Football/Rugby
After school	Homework Club School Production (Sept - Oct) ICT Catch Up	Homework Club School Production (Sept - Oct) ICT Catch Up
Friday		
Registration	-	-
Lunchtime	STF Safe Space	Board Game Club (week 2) STF Safe Space
After school	Homework Club School Production (Sept - Oct)	Homework Club School Production (Sept - Oct)

School Values and Aims

Penyrheol seeks to be a happy, caring community in which all who work are valued, supported and treated with respect and tolerance. In so seeking, we hope everyone will be motivated to achieve their full potential and strive for the highest standards of teaching, learning and behaviour.

Our four core values underpin all aspects of school life. These values have been chosen by all members of the school community as:

- Respect
- Aspire
- Thrive
- Belong

Our most important aims as a school are:

- To educate all our pupils so that they are able to be the very best they can be.
- To support, challenge and develop all our staff so that they are empowered to deliver their best to the school community.
- To work closely and constructively with parents/carers in a partnership that supports learners in making their best academic and wellbeing progress.
- To develop and maintain a strategic partnership with our governors that enables decision-making to be effective and accountable.
- To be an organisation that is central within the local community, serving community needs and bringing the community together.
- To continually evaluate, refine and develop a progression curriculum that provides the knowledge-rich education which allows our pupils to thrive within the four purposes.
- To exploit fully and improve our facilities and resources in order to maximise the learning opportunities for our pupils.
- To continually enhance the school buildings and grounds in order to facilitate effective curricular and extra-curricular learning.
- To develop our alternative curriculum provision offer to enable us to provide all our pupils with a learning experience that is right for them.

Our school motto is: ***'To Achieve You Need to Believe. I Lwyddo Rhaid Credu.'***



Careers Advice and Guidance

At Penyrheol we work closely with the Careers Service (Careers Wales) to offer support and guidance to pupils.

During the options process, Year 9 pupils receive significant guidance when making their GCSE choices. The Year 9 Options Fayre is open to both pupils and parents/carers while further directed guidance is provided via options assemblies and the options evening.

Year 11 pupils are interviewed by the Careers Adviser, Mr M. Lloyd. Our careers advisor is available three days a week and pupils enjoy the benefit of this resource.

Year 10 pupils have the opportunity to spend 5 days Work Experience with employers in the locality. We view this week as essential preparation for the world of work. Our pupils develop important employment and life skills during this time.

Mrs N. Finney coordinates our work-related education. This includes a number of enterprise activities and CWRE challenges across Years 7-9, where pupils engage in key skill development in relation to their critical thinking, communication and problem-solving.

Security, Health and Safety

Health and safety is central to safeguarding the entire school community.

We are vigilant in all matters concerning security; we regard the provision of a safe, secure and caring environment as a priority. All staff members are DBS checked and visitors sign in and out electronically at reception. All adults on school site wear an identity badge, usually accompanied by a school lanyard. Boundary fencing has improved site security and continues to provide a safer environment for both staff and pupils. All parts of the school buildings and much of the external site is covered by CCTV to ensure the safety of all pupils, staff and visitors.

All members of the school community have a responsibility for maintaining a safe environment. Any safety hazards are reported

to a site officer or member of the leadership team and these are actioned immediately.

Risk assessments are carried out as appropriate both in school and for any off-site activities. Prior to external trips and visits, staff complete risk assessments via the Evolve system, in line with Swansea LA policy. We have a significant number of first aid trained staff who can be accessed across the school site, and who are available to accompany trips and visits.

Health and safety issues are discussed on a regular basis within the meetings of the Governing Body Community and Property Sub-Committee. There is also a termly Health and Safety meeting that is chaired by Mr A. Trotman (Health and Safety officer). This ensures that emerging Health and Safety priorities are addressed and fulfilled.

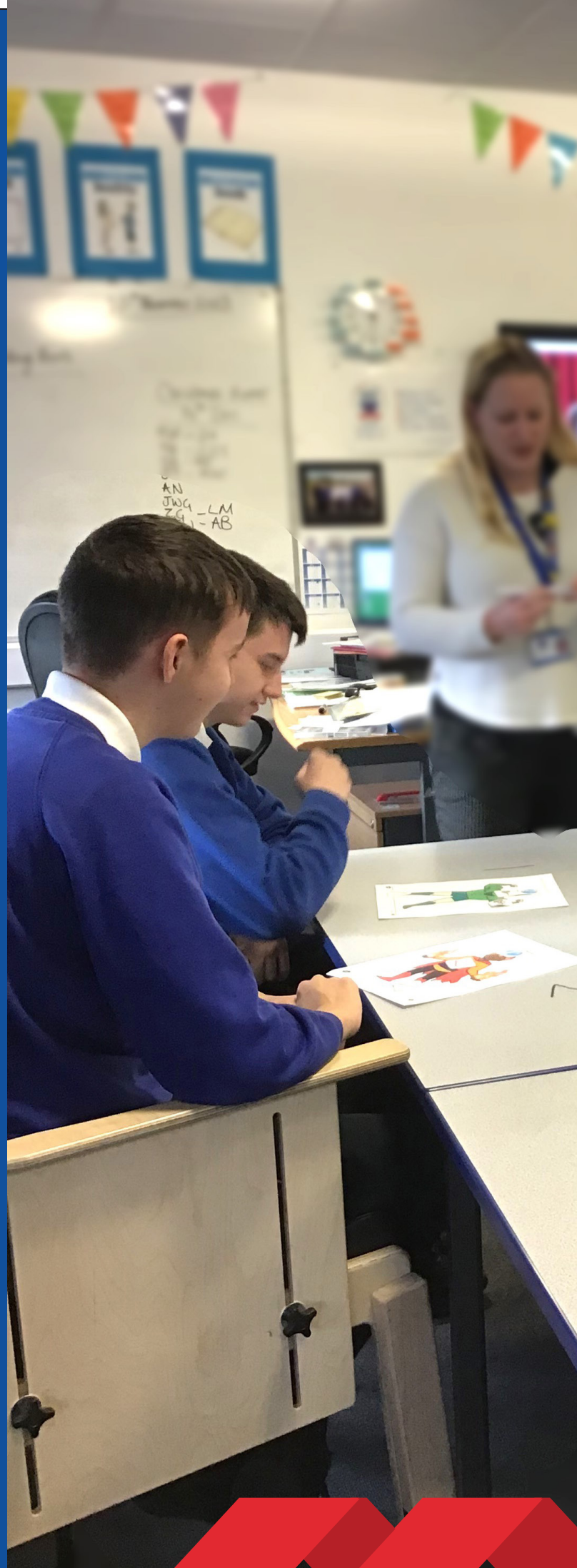
Equal Opportunities Policy

Penyrheol School, in its mission statement, emphasises the need to value and respect all members of the school community. This philosophy underpins our equal opportunities policy which applies to both pupils and staff and is in line with Local Authority policy.

Our school consults with community stakeholders - pupils, parents and other appropriate professionals - whenever there is a requirement to incorporate equitable adaptations to ensure that specific needs are met. Inclusion is at the heart of the school community and all learners are valued. In September 2009 we opened a Specialist Teaching Facility for pupils with moderate to severe learning difficulties. The pupils are based in the facility for approximately 50% of their timetable and access mainstream classes for the other 50%. The facility further enhances our inclusive ethos and diverse school community.

In all building and renovation work due attention is paid to the need to improve access for all. The new building is fully compliant with the requirements of the Disability Discrimination Act (DDA), incorporating, for example, a lift. At all levels of curriculum planning, we ensure that all pupils have full access to a curriculum that meets their academic and pastoral needs.

Celebrating diversity is a key theme of our PSHE curriculum; we shape our learners through lessons that value respect and tolerance within the local and wider community. Our PSHE curriculum is continually evolving. Staff and pupil voice are utilised in determining the most relevant education for learners.



Admissions Policy

The Pupil Admission Number for each year group is 224 with a total maximum capacity of 1118 pupils.

The schools policy, which is consistent with that of the Local Authority (LA), is to admit all pupils who apply up to the admission limit. Where there are more applicants than places, the following criteria in order of priority are used to determine who should be offered places;

- Pupils living within the school's catchment area: Gorseinon, Loughor, Kingsbridge, Penyrheol, Garden Village
- Pupils who have a brother or sister already attending Penyrheol
- Pupils who attend one of the traditional partner schools i.e. Casllwchwr, Gorseinon, Tre Uchaf, Pontybrenin and Penyrheol
- Distance from home to the school by the nearest available route

Parents/carers are responsible for the transport of children who live outside the traditional catchment area.

For more admissions information, please enter the following link into your browser:

<https://www.swansea.gov.uk/schooladmissionarrangements>





School Policy on Discipline

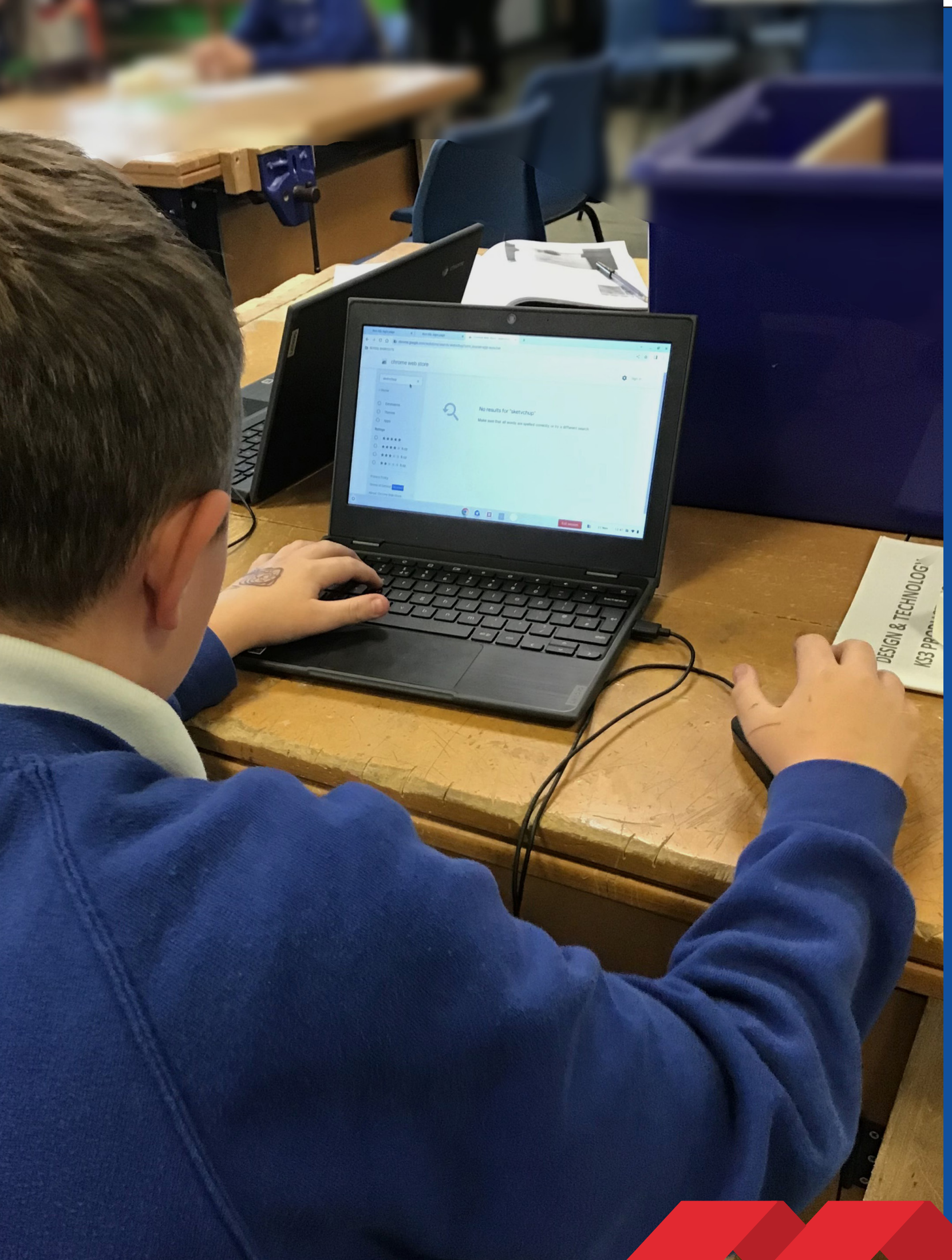
All school rules are designed to develop and nurture the pupils sense of self-discipline. Rules help our pupils learn and make progress. Orthodox disciplinary sanctions include lunch-time detention, after school detention, extra school work/ homework and withdrawal of certain privileges.

Measures such as after school detention are important as we try to teach young people what is right and wrong, acceptable and not acceptable, in an orderly society. Persistent misbehaviour is dealt with in a staged process, first by the class teacher, then the Head of Department, or the Head of Year, then the Deputy Head and, ultimately, the Headteacher. If any parent/ carer does not approve of such measures, then Penyrheol may not be a suitable choice of school for your child.

Serious breaches of discipline result in an external exclusion. Parents/ carers are frequently consulted and they are invited to support the action taken by the school.

New pupils are acquainted with school rules and expectations during their induction into the school in September. Parents/carers are informed of the basic rules when they attend the Year 6 parents meeting at the school, and are also urged to read the pupils welcome booklet. In every classroom there is a reminder of expected conduct on display.

A new Behaviour for Learning Policy was introduced in September 2023 where the focus has changed to promoting positive behaviour. This is proving to be a good motivational tool as it ensures that good behaviour is rewarded whilst poor behaviour is checked. Achievement and Behaviour points are noted on every school academic report. We insist our pupils show 'Alert' behaviours in school to maximise learning opportunities for themselves and their peers. Parents/carers and new pupils often fear bullying and with good cause. It can exist in every human situation, amongst both adults and children, at home, in work and in all schools. Here at Penyrheol the problem is reduced to a minimum because we take it seriously and act swiftly whenever a case comes to our attention. The subject is dealt with as part of our induction programme and clear advice is given to pupils. A copy of the schools policy statement is on our website or available in hard copy upon request, and advice for all parents/carers is included in our induction booklet. Please ask your child to show it to you.



Rewards

In order to help motivate pupils in their work and behaviour we have a system of Achievement Points in Years 7 - 11. Pupils can gain an achievement point for any of the reasons outlined in our rewards policy.

Points can be added to Class Charts on a daily basis to reward effort and achievement. The achievement points will be monitored weekly by form teachers and Heads of Year. Pupils who receive 50 achievement points will receive a postcard home to celebrate their achievements. Positive phone calls home will also be used to ensure that pupils are recognised for positive behaviours in the classroom and in the school environment.

When pupils receive 100 achievement points they will receive a letter home from the Head of Year to celebrate their achievements.

When pupils receive 150 -200 achievement points a letter of celebration will be posted home from the Deputy Headteacher.

When pupils receive 250 – 300 achievement points then the Headteacher will write a letter home to parents.

All pupils at each stage of achievement will receive a certificate of achievement that will be presented to them in assembly. Pupils with 250 – 300 achievement points will be able to attend the rewards trip that will take place in July of each academic year. They will also be awarded with a Penyrheol pin badge that is presented to them in an awards assembly.

Pupils who achieve 100% attendance throughout the year will receive a reward as recognition of this achievement. Pupils achieving 100% attendance in any given month are entered for a prize draw and one pupil per year group receives a £10 voucher. We also add in incentives for attendance e.g. days of adventure, raffle prize draw at the end of each school day in December, and a small prize is won by a pupil in each year group.

Pupils are also nominated at the end of each half term by their Head of Year for outstanding practice and by each department for the best effort and attainment in a subject area. All results are published in the termly newsletter.



Attendance

Daily punctual attendance is a vital preparation for adult life and has a powerful influence on progress and examination results. Parents/carers have a legal responsibility to ensure regular attendance and to inform school in writing of the reason for each absence. Penyrheol Comprehensive takes the matter of attendance seriously and incentive schemes have been developed to encourage pupils to aim for 100% attendance.

The impact of poor attendance on the educational outcomes of young people should not be underestimated. Along with the other schools in the ERW region of Wales (Swansea, Neath Port Talbot, Carmarthenshire, Pembrokeshire, Ceredigion and Powys), we will not authorise any holidays that are taken in term time, other than in exceptional circumstances.

The descriptors that we use for attendance are:

100%	Excellent
97 - 99.9%	Very Good
94 - 96.9%	Good
90 - 93.9%	Room for Improvement
Below 90%	Cause for Concern

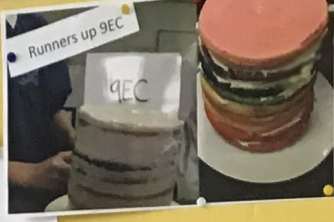
Please note that even 95% attendance (which may sound high), actually means that your child has missed 9.5 school days in a year. A pupil with 93% attendance is less likely to achieve 5 good GCSE grades in Year 11!

If your child is absent from school for any reason, please ring the school on 01792 533066 and leave a message to explain why or ensure that s/he brings a note explaining the absence on the first day back to school.

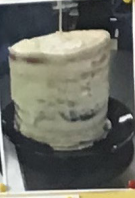
In January 2023 the number of pupils on roll was 873.



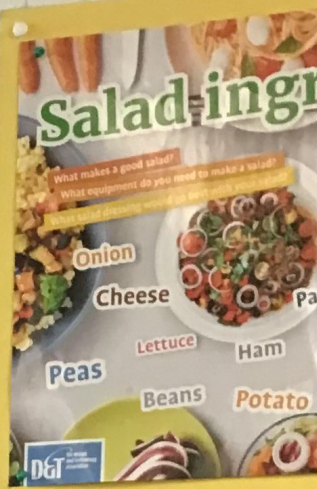
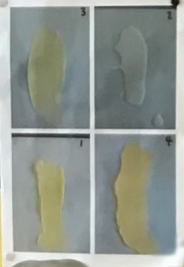
Rainbow Layer Cake Bake-off 2022



- Cake Criteria**
- Equal and even layers
 - Fluffy aerated sponge
 - Straight sides
 - Good icing coverage
 - Buttercream icing tasted good and had good consistency
 - Teamwork for making decisions



- Rainbow layers in correct order
- Stable construction
- Easy to slice and serve
- Tasted good
- Delicious sweet taste
- Vanilla flavoured sponge cake
- Colourful and fun



Summary of School Performance

LA/School No. 670 / 4062

Pupils in Year 11

Number of pupils in Year 11 who were on roll in January 2023: 176

Number of pupils in Year 11 who were on roll in May 2023: 168

Average points score per pupil:

	Capped 9 measure (interim)	Literacy measure	Numeracy measure	Science measure	WBQ measure
School 2022/23	362	41.2	38.5	39.3	40.7
School 2022/23	377	43	40	41.1	42.6
LA Area 2022/23 (Provisional)	371	41.2	39	38.2	37

Other Performance Measures:

	Level 1 Threshold	Level 2 Threshold	5.2% or more A*/A Grades
School 2022/23	90.9%	68.2%	14.8%
School 2022/23	95%	71%	15.5%
LA Area 2022/23 (Provisional)	94.5%	77%	24.4%

(1) For details on approved qualifications, point scores and contribution to thresholds, please see the Qualifications Wales website (QiW) at <https://qiw.wales/>

(2) For details on the calculation of these indicators please see the guidance note at: <https://gov.wales/interim-key-stage-4-school-performance-arrangements>

GCSE Results of Year 11 Pupils

Subject	Number of Pupils Entered	Percentage A* - A	Percentage A* - C
Art and Design	17	35.3	82.4
Photography	20	70	80
Biology	31	45.2	96.8
Chemistry	31	16.1	90.3
Computer Science	12	50	75
Drama	14	42.9	78.6
English Language	165	23	73.3
English Literature	161	13.7	62.1
Food Technology	13	7.7	53.8
Geography	35	20	82.9
Health and Social	38	39.5	89.9
History	49	28.6	81.6
Digital Technology	31	22.6	74.2
Maths	164	18.9	59.1
Numeracy	162	14.2	53.7
Media	18	11.1	66.7
Music	15	20	93.3
PE	34	38.2	88.2
Physics	31	38.7	93.5
Product Design	14	0	28.6
Science (Double Award)	116	15.5	87.9
Science (Applied)	148	0.7	48
Skills Challenge Certificate (WBQ)	157	24	90
Spanish	13	15.4	76.9
Welsh	120	12.5	76.7

School Uniform

SWEATSHIRT	Royal blue with school crest
POLO SHIRT	White soft collared with school crest not displaying other logos
TROUSERS	Plain black and carrying the school trademark
SKIRTS	(Optional) Plain black and carrying the school trademark
SHORTS	(Optional) Plain black and carrying the schools trademark
SHOES	Plain black shoes or plain black trainers
SOCKS	Black, grey or white
TIGHTS	Plain black and with skirts
TOPCOATS	Sensible waterproofs - no denim, fleeces or non school sweatshirts
OPTIONAL	Light weight / rainproof jacket with school crest

Please ensure all items are clearly marked with your child's name.
Hoodies are not to be worn in place of the school sweatshirt.
Pupils are allowed to wear a nose stud (not ring), one pair of stud earrings and a watch.

Boys Physical Education Kit

Field Sports	Indoor Sports	Swimming
SCHOOL RUGBY SHIRT OR T-SHIRT	T SHIRT	Costume may be any colour but NOT long shorts
SHORTS (rugby or football)	SHORTS	
SOCKS (rugby or football)	TRAINERS	
BOOTS (rugby or football)		
Cold weather – tracksuit bottoms and tops		

Girls Physical Education Kit

Field and Indoor Sports	Swimming
T SHIRT	Any colour one piece costume
3/4 LEGGINGS WITH SCHOOL LOGO	Bathing Cap
TRAINERS	
Cold weather – tracksuit bottoms and tops Optional – rugby shirt	

All school uniform items and P.E. kit can be purchased from the following suppliers:

Sew & Sew
104d, High Street Plot 3
Gorseinon
Swansea
SA4 4BP

Picton Sports Ltd
Heol Aur Business Park
Dafen Industrial Estate
Llanelli
SA14 8QN



BELONG
PARCHU

THRIVE
DYHEU

ASPIRE
FFYNNU

RESPECT
PERTHYN