

Ysgol Gyfun

PENYRHEOL

Comprehensive School



BELONG
PARCHU

THRIVE
DYHEU

ASPIRE
FFYNNU

RESPECT
PERTHYN

Year 9 Options 2026

Make the Right Choices for You

This is an exciting point in your education as you will start to change your learning to meet your own needs. It is an opportunity to make good choices, based on the subjects that you enjoy. You are more likely to succeed if you are interested in the topics that you are learning. Think about your future - are there subjects that you believe that you will need for college or for your future career? Most Year 9 pupils have no idea of what the future holds so keep your options open - choose a balance of subjects that will keep a wide range of career pathways open to you. Remember to be your own person. Don't follow your friends when choosing your subjects, be your own person and do what is right for you. You might find that you learn a lot more without the distraction of friends in your class! Remember to ask different people for advice e.g. your parents/carers, Subject Teachers, Head of Year, Deputy Head Teacher and Careers Advisor, who will be pleased to help you.

This booklet sets out to tell you and your parents/carers a little about which subjects and courses are on offer at Penyrheol Comprehensive School. Read it carefully. Some subjects change drastically between Years 9 and 10, so find out all about them before you decide. There are also some subjects on offer that you won't have studied before, and it is important to understand what these new subjects involve.

Progress and Wellbeing Leader for Year 9	Miss. M. Brace	
Progress and Wellbeing Coach for Year 9	9M – Mr. G. Davies 9E – Miss. S. Evans 9D – Mr. J. Carruthers	9R – Miss. A. Adey 9U – Mr. D. Brown 9S – Mrs. L. Fox
Deputy Headteacher	Mrs. S. Goulden	



The Year 10 Curriculum

The Subjects you choose fall into two categories;

Compulsory Subjects and Optional Subjects.

Compulsory Subjects	<p>The following Subjects will be taken by ALL pupils in Year 10;</p> <ul style="list-style-type: none">▪ English Language and Literature▪ Mathematics and Numeracy▪ Science▪ Welsh▪ Physical Education▪ Health and Wellbeing▪ WBQ (Welsh Baccalaureate Qualification)
Optional Subjects	<p>Pupils will choose three options from a list of courses available. There is a preliminary phase of 'Open Options' where pupils make <i>initial</i> choices from all subjects areas. This information is then used to shape the Option Pools from which pupils will select their 'Final Options' from.</p>

Monday 19 th January	Year 9 Options Assembly.
Monday 26 th January	The Options Booklet is available via the school website.
Tuesday 3 rd February	Year 9 Assessment Week.
Monday 9 th February	An Options Fayre will be held in the School Canteen 3:15pm – 4:00pm. Options Presentation to be delivered in the School Theatre 4:10pm – 4:40pm Initial 'Open Option' forms will be available via a link on the School Website and Class Charts.
Friday 13 th February	Deadline for submitting the initial 'Open Option' form. (These subject choices will inform the 'Final Option' Pools from which pupils make their decision).
Friday 27 th February	Initial 'Open Option' choices have now been processed and 'Final Option' pools decided upon. 'Final Option' choice forms will be made available via a link on the School Website and Class Charts.
Friday 20 th March	'Final Option' Deadline.

Important Information

It is important to choose a range of subjects from different areas. For example, we would not recommend choosing three Humanities or three Expressive Arts/Creative subjects. By selecting subjects that cover diverse disciplines, you open yourself up to multiple pathways allowing for greater flexibility later on in College, University or indeed your working life.

STF Options.

Parents and Carers of STF pupils should contact Mrs. C. Metcalfe-Day in our Specialist Teaching Facility (STF) when the Option Period commences. They will be given the necessary support and guidance to ensure their child can access the right Options for them. It may be that STF pupils require different Option Choices and we endeavor to explore all possibilities in this regard, ensuring our STF pupils get the very best educational experience.










Please Note...

1. The 'Open Option' and 'Final Option' choices will be examined carefully and the demand for each subject area will be assessed. If a subject has low demand, it may be withdrawn and pupils will be asked to choose again. Pupils and parents will be informed if this situation occurs.
2. Some of the subjects offered have limited spaces available. It may be that these popular subjects become oversubscribed. When this occurs, entry onto these subjects will be considered in view of the following criteria.
 - Attendance
 - Behaviour
 - Attitude to Learning
 - Meeting the deadline for submitting your 'Final Option' form
3. Some subjects are not recommended to be taken together. This is because the course content overlaps too significantly. For example, *Constructing the Built Environment* and *Product Design* are not suitable to be taken alongside one another.
4. Make sure you are completely satisfied with your options **BEFORE** the end of Year 9. We do not recommend Option changes in Year 10. We expect each pupil to make a two-year commitment to the subjects chosen, so it is very important to take this time seriously and consider what options are most suitable for you.

The 14 – 16 Curriculum

The 14 – 16 Curriculum is divided into six separate 'Areas of Learning and Experience' (AoLEs). For the purpose of this Options Booklet, the compulsory subjects have been listed separately, but retain a colour code that identifies the AoLE in which these particular subjects would be found.

Compulsory Subjects	GCSE English Language and Literature	
	GCSE Mathematics and Numeracy	
	GCSE Science	
	GCSE Welsh	
	WBQ (Welsh Baccalaureate Qualification)	
	Physical Education	
	Health and Wellbeing	
Expressive Arts	GCSE Art or Photography	
	GCSE Drama	
	GCSE Media Studies	
	GCSE Music	
Health and Wellbeing	GCSE Physical Education	
	BTEC Sport	
	BTEC Hair and Beauty	
	LEVEL 1/2 Hospitality and Catering	
	GCSE Health and Social Care & Childcare	
Humanities	GCSE Business Studies	
	GCSE Geography	
	GCSE History	
	BTEC Public Services	
	GCSE Religious Studies	
	Welsh Baccalaureate Qualification - WBQ	
Languages, Literacy and Communication	GCSE English Language and Literature	
	GCSE International Languages - French or Spanish	
	GCSE Welsh	
Mathematics and Numeracy	GCSE Mathematics and Numeracy	
Science and Technology	GCSE Computer Science	
	LEVEL 1/2 Constructing the Built Environment	
	GCSE Design Technology: Product Design	
	GCSE Digital Technology	
	GCSE Science	

English Language and Literature

Head of Department: Mrs. S. Marks
Second in Department: Ms. B. Davies

Your child will be studying the new WJEC GCSE English Language and Literature qualification, designed to align with the Curriculum for Wales. This qualification aims to develop learners' understanding, empathy and communication skills through a diverse and inclusive range of literary and non-literary texts.

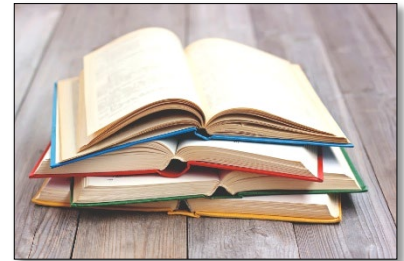
Assessment Overview:

Single Award: <ul style="list-style-type: none">No-Examination Assessment (NEA): (40%)Examinations: (60%)	Double Award: <ul style="list-style-type: none">No-Examination Assessment (NEA): (40%)Examinations: (60%)
-----------------------------------------------------------------------------------------------------------------------------------------	-----------------------------------------------------------------------------------------------------------------------------------------

All students in Wales are expected to sit Double Award. Single Award is reserved for exceptional circumstances.

Course Structure:

The course is organised into units to be completed over two years.



Year 10:

Unit 1: Context and Meaning

- Assessment Method: Written Examination (1 hour 30 minutes).
- Content: Analysis of Poetry from the WJEC Anthology and unseen poems, alongside creative literary or non-fiction writing.

Unit 2: Belonging

- Assessment Method: Non-Examination Assessment (NEA)
- Content: A written essay based on the study of a prose text and an individually researched oral presentation linked to the theme of belonging.

Unit 3: Influence and Power

- Assessment Method: Non-Examination Assessment (NEA)
- Content: Participation in a group discussion and a piece of creative non-fiction writing exploring how language can influence and convey power.



English Language and Literature

Year 11

Unit 4a: Motivation (Single Award)

- Assessment Method: Written Examination (1 hour 30 minutes)
- Content: Analysis of prose and poetry texts focusing on voice and perspective, including comparative analysis.

Unit 4b: Motivation (Double Award)

- Assessment Method: Written Examination (2 hours)
- Content: In-depth analysis of prose and poetry texts, with an emphasis on voice, perspective and comparative analysis.

Unit 5: Continuity and Change (Double Award)

- Assessment Method: Non-Examination Assessment (NEA)
- Content: An extended response based on the study of a Shakespeare play and a paired discussion on poetry from different periods; focusing on themes of continuity and change.

Unit 6: Critical and Creative Responses (Double Award)

- Assessment Method: Written Examination (2 hours)
- Content: Critical analysis of unseen texts and creative writing tasks, encouraging learners to respond both analytically and creatively.

These qualifications provide learners with opportunities to engage with a variety of texts, fostering inclusivity and helping them understand the impact of community and acceptance. The integration of language and literature studies supports the development of analytical and creative skills, preparing learners for further education and active participation in society.

For more detailed information please refer to the WJEC specification;

https://www.wjec.co.uk/qualifications/gcse-english-language-and-literature-double-and-single-award-teaching-from-2025/#tab_keydocuments



Mathematics and Numeracy

Head of Department: Mrs. K. Cavendish

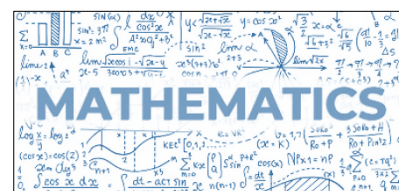
All pupils will study the Double Award Mathematics GCSE course, which awards two grades in the qualification. This course will aid pupils in developing an understanding of different areas of Mathematics and their connection, as well as extending the range of mathematical skills and techniques. Pupils will use and apply these skills in real-life contexts and will gain a strong foundation in financial mathematics to help prepare them for life and work.

The Double Award Mathematics GCSE has two tiers of study (Higher and Foundation) and pupils are entered for the examination tier that is most suited to their ability.

	GCSE Grades available
Higher Tier	A*, A, B C, D
Foundation Tier	C, D, E, F, G

There are four strands which are required to be assessed:

- Number
- Algebra
- Geometry and Measures (inc. Financial Mathematics)
- Statistics



Double Award Mathematics GCSE - Higher Tier

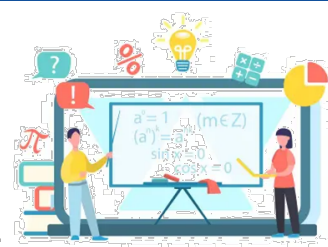
Unit 1 – Financial Matters & Application of Numeracy Weighting – 30% of the Qualification	Examination (1 hour 45 Minutes) 80 marks available
Unit 2 – Non-Calculator Assessment Weighting – 30% of the Qualification	Examination (1 hour 45 minutes) 80 marks available
Unit 3 – Calculator Allowed Assessment Weighting – 40% of the Qualification	Examination (2 hours) 90 marks available

Double Award Mathematics - Foundation Tier

Unit 1 – Financial Matters & Application of Numeracy Weighting – 30% of the Qualification	Examination (1 hour 30 Minutes) 65 marks available
Unit 2 – Non-Calculator Assessment Weighting – 30% of the Qualification	Examination (1 hour 30 minutes) 65 marks available
Unit 3 – Calculator Allowed Assessment Weighting – 40% of the Qualification	Examination (1 hour 45 minutes) 75 marks available

The Assessment criteria for each GCSE is broken down into three objectives:

- AO1 – Recall and use knowledge of the prescribed content
- AO2 – Select and apply mathematical methods
- AO3 – Interpret and analyse problems and generate strategies to solve them.



Pupil progress is carefully monitored throughout both Key Stages. Analysis of pupil achievement and effort throughout Key Stage 3 is used to formulate teaching groups and suitable adjustments can be made to these groups at any time during Key Stage 4 for the benefit of the pupil involved.

Mathematics and Numeracy

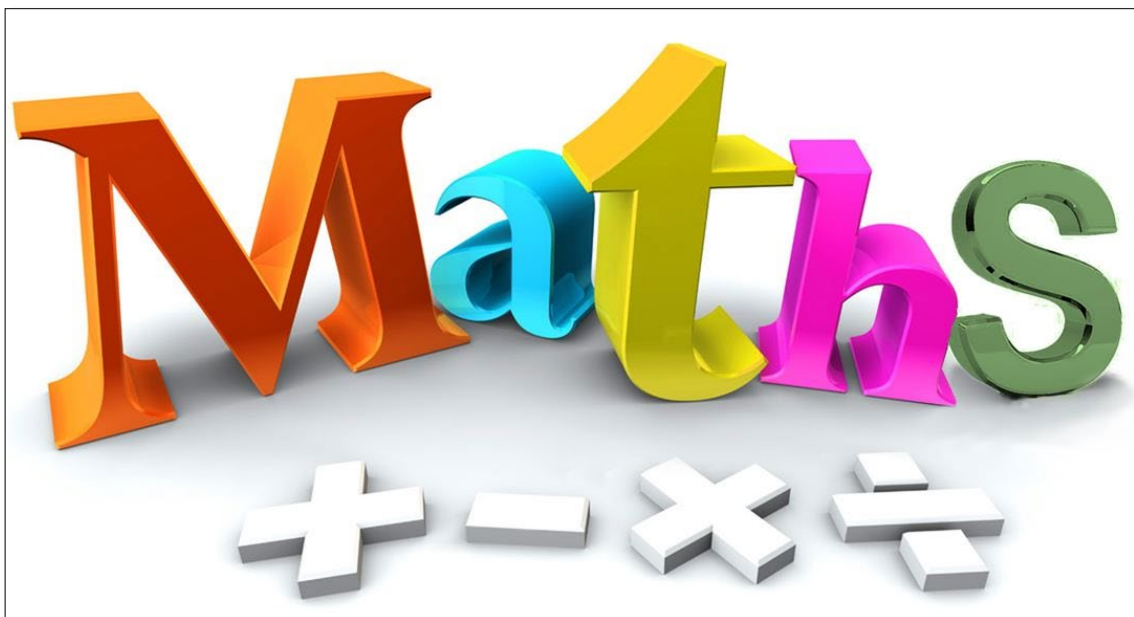
Mathematics Entry Level

Mathematics Entry Level is a robust and organized course, that caters to pupils for whom the full GCSE qualification would not be appropriate. Admission onto this course is considered in view of the pupils' ability and individual needs. The course is divided into four modules, with assessments throughout the two-year course, and an external examination held in Year 11.

Modules	Assessment Components	When?
Module 1	<ul style="list-style-type: none">Intermediate Test 1Aural Test 1Practical Exercise 1	Autumn Term, Year 10
Module 2	<ul style="list-style-type: none">Intermediate Test 2Aural Test 2Practical Exercise 2	Spring/Summer Term, Year 10
Module 3	<ul style="list-style-type: none">Intermediate Test 3Aural Test 3Practical Exercise 3	Autumn Term, Year 11
Module 4	<ul style="list-style-type: none">Investigative Task	At Any Stage Year 10 or Year 11

Mathematics Entry Level culminates in an external examination, which will be held in May of Year 11.

For this qualification, pupils are awarded 3, 2 or 1 if they pass the course, with 3 being the highest.

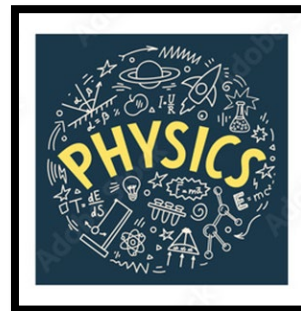
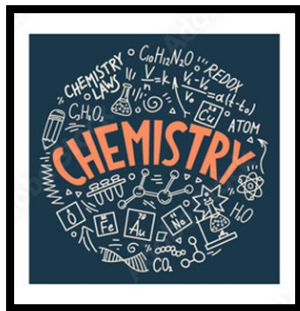
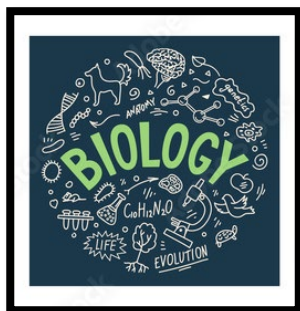


Science

Head of Department: Mrs. T. Tate

Triple Science

This course will involve studying Biology, Chemistry and Physics as three separate GCSE Sciences. Pupils can attain three independent grades for each area!). This course is recommended for pupils who are considering or intending on studying an A Level in Biology, Chemistry and/or Physics. This course gives pupils a better scientific foundation for Further and Higher Education.



Year 10

Pupils will study for three Unit 1 Examinations which will be at the end of Year 10. These Examinations are each sat for a duration of 1hr 45 minutes. These exams are each worth 45% of the final GCSE grade.

- Biology: Cells, Organ Systems and Ecosystems
- Chemistry: Chemical Substances, Reactions and Essential Resources
- Physics: Electricity, Energy and Waves

Year 11

Pupils will study for three Unit 2 Examinations which will be at the end of Year 11. These Examinations are each sat for a duration of 1hr 45 minutes. These exams are each worth 45% of the final GCSE grade.

- Biology: Variation, Homeostasis and Micro-Organisms
- Chemistry: Chemical Bonding, Application of Chemical Reactions and Organic Chemistry
- Physics: Forces, Space and Radioactivity

Pupils will also complete a practical assessment for each discipline, Biology, Chemistry and Physics. These assessments will take place between January and February of Year 11. Each of the practical assessments constitute 10% of the final GCSE grade.

Pupils can sit either the Higher or Foundation Tier examination, and will attain the following grades:

- Higher Tier: A* – D grades
- Foundation Tier: C – G grades

Core Cymraeg

Head of Department: Mr. N. Binding

The majority of Year 10 students will follow the GCSE Core Cymraeg course over four lessons a fortnight. There will be three broad themes, namely:

- **Cynefin** (Habitat)
- **Diwylliant** (Culture)
- **Hunaniaeth** (Identity)



There will be four Units of Study which are not tiered. Grades A* - G are available to all students in each Unit, which will be completed in Year 11. Candidates are permitted to re-sit any Unit once only.

Unit 1 Responding to a Visual Stimulus	Non-Examination Assessment: 6 – 8 minutes (Pair), 8 – 10 minute (Groups of 3) Worth 25% of the Final GCSE grade (50 marks available)
<p>This assessment is a task for a pair or group of three. It is based on a visual stimuli provided by the WJEC, and intended to stimulate discussion.</p> <p>The assessment will consist of three parts, conducted in the following order:</p> <ul style="list-style-type: none">▪ Watch a visual clip (approximately 2 minutes) twice, and fill in a related grid.▪ Discussion between the pair/group of three, on what was observed in the visual clip.▪ An extended discussion between the pair/group of three, on one of the main themes of the stimulus. <p>This task is dual - assessed, with the Speaking component worth (10%) and the Listening component worth (15%). Together, this task is worth 25% of the final GCSE grade.</p>	

Unit 2 Responding to Various Sources	Non-Examination Assessment: 6 – 8 minutes (Pair), 9 – 12 minute (Groups of 3) Worth 25% of the Final GCSE grade (50 marks available)
<p>This assessment is a task for a pair or group of three. It is based on a text-based stimuli provided by the WJEC, and intended to stimulate discussion. The stimuli can be a combination of graphs, pictures and short reading extracts.</p> <p>The assessment will consist of three parts, conducted in the following order:</p> <ul style="list-style-type: none">▪ Observe the stimulus material and use 10 minutes of preparation time prior to discussion.▪ Discussion between the pair/group of three, on the content of the text-based material.▪ Express an opinion on the content of the text-based material. <p>This task is dual - assessed, with the Speaking component worth (20%) and the Listening component worth (5%). Together, this task is worth 25% of the final GCSE grade.</p>	

Core Cymraeg

Unit 3 Preparing for the Future	Written Examination: 1 hour 30 minutes Worth 25% of the final GCSE grade (100 marks available)
-------------------------------------------	-------------------------------------------------------------------------------------------------------------

This assessment is a non-verbal reading task, with a written examination. Pupils will be required to answer a variety of short and long-form questions, that demonstrate descriptive, narrative, persuasive, informative, critical, analytical and opinion writing. It will also require pupils to demonstrate their translation skills.

Unit 4 Literature and Creative	Written Examination: 1 hour 30 minutes Worth 25% of the final GCSE grade (100 marks available)
------------------------------------------	-------------------------------------------------------------------------------------------------------------

This assessment is a non-verbal reading task, with a written examination. Pupils will be required to answer a variety of short and long-form questions, that demonstrate descriptive, narrative, creative, imaginative, persuasive and analytical writing. Pupils will be expected to express their opinions and respond to a set piece of literature. Advance notice will be provided on the set text to be examined. This examination is dual-assessed, with the *Reading* component worth (10%) and the *Writing* component worth (15%). Together, this examination is worth 25% of the final GCSE grade.

Further details of the course can be found on the WJEC website. Go to www.wjec.co.uk click on the Qualifications option at the top of the page, and entering *GCSE Core Cymraeg* into the search engine.

Some advantages of speaking Welsh and English:

- Bilingual children tend to be more successful in education and perform better in tasks.
- Bilingual people find it easier to learn additional languages.
- Bilingualism strengthens cognitive abilities and bilingual people tend to be more creative and flexible.
- Speaking two languages is an extra skill to put on an application form when applying for a job.
- Employers need bilingual workforces in Wales as services need to be offered bilingually.
- More and more employers across Wales are keen to recruit staff who are able to work comfortably in both languages.
- Research shows that being bilingual delays the onset of Dementia and other symptoms of Alzheimer disease.

CYMRAEG



Welsh Baccalaureate (WBQ)

Head of Department: Miss. D. Kruk

Aims of the Course:

The central focus of the Welsh Baccalaureate Qualification (WBQ) at Key Stage 4 is to develop essential and employable skills that are required for further education, training and employment.

What is the Welsh Baccalaureate Qualification (WBQ)?

The qualification is awarded by pupils achieving a combination of five GCSEs and the Skills Challenge Certificate. Pupils can attain the WBQ at either the National Level, or the Foundation Level.



WBQ - National Level

The National Level requires pupils to achieve grades A* - C in the following GCSEs:

- English Language and Literature
- Mathematics and Numeracy
- Plus, three other GCSEs

The National Level also requires pupils to pass the Skills Challenge Certificate at a grade C or above.

WBQ - Foundation Level

The Foundation Level requires pupils to achieve grades A* - G in the following GCSEs:

- English Language and Literature
- Mathematics and Numeracy
- Plus, three other GCSEs

The Foundation Level also requires pupils to pass the Skills Challenge Certificate.

What is the Skills Challenge Certificate?

The skills challenge is delivered over two years. There is no examination, however pupils must cover four components of work, which are evaluated through three controlled assessment tasks. All three tasks will be completed in school, with two of the tasks completed under controlled conditions.

In Year 10, pupils will complete:

- Enterprise and Employability Challenge (worth 25%)
- Global Citizenship Challenge (worth 25%)

} Both tasks completed under controlled conditions

In Year 11, pupils will complete:

- Individual Project – On a topic of their choosing (worth 50%)

} Task Not completed under controlled conditions

The combined outcome of all four components, will determine the grade pupils achieve in the Skills Challenge Certificate. Available grades are A*-C, Pass* (D equivalent), and Pass (F equivalent).

Physical Education

Physical Education is a compulsory component to every child's education. Pupils will participate in 1 hour of practical Physical Education every week. The aim is to encourage pupils to engage in a healthy and active lifestyle through regular physical activity. In doing so, pupils not only improve their athletic ability, but develop their knowledge in the various areas studied.

All pupils will participate in a wide range of activities, consisting of team games, individual games and fitness activities; which includes free induction and use of the Leisure Centre Fitness Suite. Pupils are also introduced to other roles within Physical Education, such as coaching and officiating. These activities can be an excellent way for pupils to remain engaged with this subject when limitations may prevent them from participating in the practical aspects.

ALL PUPILS ARE EXPECTED TO BRING SUITABLE SPORTS KIT FOR EVERY LESSON.



Health and Wellbeing

This is a compulsory part of every child's education. Although it does not constitute an examination subject, it is designed to develop young people as ethical, informed citizens. Pupils will engage in a number of lessons throughout the year, based on themes such as;

- Health Education, including Relationships and Sex Education
- Study Skills
- Careers Guidance
- Personal Development
- Community, Rights and Responsibilities
- CWRE (Careers and Work-Related Education)



Art

Head of Department: Ms. V. Hine

Why Choose Art?

Art is a very popular subject where the aim of the course is to allow pupils to express their individuality and creativity. Art is an exciting and enriching subject where pupils experiment with a wide range of creative experiences in 2D and 3D form. Pupils independently research contemporary and traditional artists throughout history in order to develop ideas and produce a final outcome in the material of their choice.

The Course

Pupils will produce two units of work during the GCSE course. Unit 1 (worth 60%) will be completed over two years, and consists of pupils producing a full sketchbook of Artwork based on a topic of their choosing, as well as a final piece. Unit 2 (worth 40%) will be completed in Year 11 and consists of pupils producing a sketchbook of Artwork based on a question/topic selected from a WJEC examination paper, as well as a final piece which will be completed under timed exam conditions.

Year 10

Pupils will produce a sketchbook of artwork where they conduct independent research by collecting images, taking photographs and studying various artists/cultures. Pupils will draw from direct observation and produce work using a range of different materials such as clay, canvas painting, ink and paint etc.

Year 11

Pupils will produce a sketchbook of artwork based on a WJEC examination question/topic. Pupils will then be required to produce a single piece of artwork under timed exam conditions, ensuring that all assessment objectives are met.

Both Units have four clear assessment objectives:

- Contextual Understanding (researching various artists)
- Creative Making (experimenting with a range of different materials)
- Reflective Recording (collecting information and annotation of own work and work of artists)
- Personal Response (presentation of artwork and final outcomes based on study)



Pupils are expected to conduct extensive research, experiment with a range of materials, and appropriately reflect on their work, presenting a comprehensive body of work.

Careers in Art?

Art can open the door to lots of exciting careers. Not only in the field of design (fashion, graphic, theatre, interior etc) but other creative occupations too like advertising & publishing, architecture, journalism and even teaching. Illustrators, animators and video-game designers will have followed an artistic path, and even careers such as cosmetic design (Hair & Make-up, set design, costume design etc) take root in Art. There are so many opportunities beyond school and there are really no limits to where Art can take you.

Photography

Head of Department: Ms. V. Hine

Why Choose Photography?

Photography is a course designed to broaden your understanding of a variety of light and lens-based photographic techniques and processes. Pupils learn various techniques including cyanotype, digital manipulation in photography, collage, photo montage and light painting. This course will teach you to look at the world in a creative way, developing and applying robust analytical and critical skills.

The Course

Pupils will produce two units of work during the GCSE course. Unit 1 (worth 60%) will be completed over two years, and consists of pupils producing two full sketchbooks of work, with one based on a topic of their choosing, as well as a final piece. Unit 2 (worth 40%) will be completed in Year 11 and consists of pupils producing a sketchbook of work based on a question/topic selected from a WJEC examination paper, as well as a final piece which will be completed under timed exam conditions.

Year 10

Pupils will learn about the functionality of a digital camera, and experiment with a range of photographic techniques. Pupils will produce two sketchbooks of work, focusing on the many elements of photography. Pupils will be asked to produce a final piece, demonstrating a range of different skills, including digital manipulation techniques with packages such as Photoshop.

Year 11

Pupils will produce a sketchbook of work based on a WJEC examination question/topic. Pupils will then be required to produce a single piece of work under timed exam conditions.

Both Units have four clear assessment objectives:

- Contextual Understanding (researching various artists)
- Creative Making (experimenting with a range of different materials)
- Reflective Recording (collecting information and annotation of own work and work of artists)
- Personal Response (presentation of artwork and final outcomes based on study)



Pupils are expected to conduct extensive research, experiment with a range of techniques, and appropriately reflect on their work, presenting a comprehensive body of work and final piece.

Careers in Photography?

Photography can open the door to lots of exciting careers. Not only in the field of design (fashion, graphic, theatre, interior etc) but other creative occupations too like advertising & publishing, architecture, journalism and even teaching. Illustrators, animators and video-game designers will have followed an artistic path. There are so many opportunities available to you beyond school, so there are really no limits to where Art, or Photography in particular, can take you.

Drama

Head of Department: Mrs. A. Williams-Sheaf

The WJEC GCSE Drama qualification will support you to:

- Explore Drama created and performed by other people to help develop your own talents.
- Gain understanding of a range of techniques, forms, styles, genres and contexts
- Reflect on, evaluate and refine your work
- Explore diversity, identity and culture
- Discover and explore your performance and/or design skills



What will I study?

The GCSE Drama qualification will allow you to explore and respond to stimuli, create and reflect on your own work, develop your own creativity and engage with many different styles of theatre. You will also have the opportunity to build on your understanding of acting, directing, design and technical theatre.

How will I be assessed?

Over the two years, you will complete three units of work. Two practical non-exam assessments worth 40% and 30%, and one online examination worth 30% of your final GCSE grade.

Unit 1 – Devising Theatre (96 marks = 40% of the qualification)

This is a practical non-exam assessment. It is one devised piece in response to a chosen stimulus, performed in a group of between two and five actors, and up to four designers.

Unit 2 – Performance from a Text (72 marks = 30% of the qualification)

This is a practical non-exam assessment. It is a performance of one extract from a text of your choice, performed in a group of between two and four actors and up to two designers. This performance will be assessed by a visiting examiner.

Unit 3 – Interpreting Theatre (72 marks = 30% of the qualification)

This is an online examination that will be completed on a computer in school, under exam conditions. The examination will last 2 hours. The exam is broken into two sections, Section A and Section B.

Section A:

You will be asked questions based on a set text you will have studied in lessons.

Section B:

You will be asked questions based on an excerpt of a live theatre production from one of four set genres. You will be able to watch the excerpt during the exam. The four genres are Musical Theatre, Naturalism, Theatre in Education or Physical Theatre.

Drama

What skills will I develop?

Exploring:

You will have the opportunity to explore, experience and interpret many different styles and genres of theatre linked to different cultures in Wales and the world. You will be able to build on these ideas to create and develop your own theatre when devising and when working from a script.

Responding and Reflecting:

You will be able to recount, evaluate and refine your work through reflection and feedback from others, to create an exciting, imaginative and successful finished product. You will also be able to evaluate and analyse the work of others to inform your own creativity.

Creating:

In Unit 1, you will devise your own original piece of theatre in response to a stimulus and in a style/genre of your choice, within a group of your peers. In Unit 2, you will work from a text of your choosing, also in a style of your choosing.

Careers in Drama?

This qualification provides an excellent foundation for the study of Drama at A-Level. It will also provide a satisfying and worthwhile course of study for you if you choose not to study further. Importantly, studying Drama will develop many transferable skills including communication, presentation skills, teamwork, leadership, focus, refinement, creativity and self-confidence.



The career options that come from studying Drama are extensive, but here are a few of those options:

- Actor
- Producer
- Director
- Script Writer
- Playwright
- Lighting Designer
- Sound Technician
- Costume Designer
- Scenic Make Up Artist
- Make Up Technician
- Prosthetics Technician
- Dramaturg
- Theatre Manager
- Stage Manager
- Theatre Agent
- Casting Director
- Community Arts Manager
- Art Administrator
- Workshop Leader
- Drama Therapist
- Broadcasting Crew
- Theatre/TV Director
- Researcher
- Studio Supporting Artist
- Events Management
- Marketing Executive
- Recruitment
- Primary School Teacher
- Secondary School Teacher
- University Lecturer

Digital Media and Film

Head of Department: Mrs. L. Morgan

Digital Media and Film is a GCSE course suitable for learners with a keen interest in the media and the world of film. This subject will provide a good foundation for pupils wanting to go into careers such as journalism, graphic design, social media and film. This is a highly creative course with opportunities to not only study how the media works, but also create your own form of media. Pupils will be based in an ICT room with all the essential equipment available to provide a rich and multi-faceted learning experience.

Over the two years, pupils will complete three units of work and will be assessed by submitting two pieces of coursework and sitting one online examination.

Unit 1 is worth 30% of the final GCSE grade. For this unit, pupils will sit an online exam, which is completed on a computer in school, under exam conditions. The examination will last for 1 hour and 30 minutes. Pupils will answer short multiple-choice questions, as well as longer questions about studied films, a video game and an unseen piece of media such as the news and/or social media.

- You will watch two films, one from Wales and one global film. You will study how they were made and compare them. You will look at how were they produced and what themes/issues feature, etc.
- You will study a section of a video game, looking at world building, quests, plot, genre, multi-player and key issues in gaming.
- You will learn about online news and social media. You will learn about fake news and viral news, as well as the regulation of these platforms.



Unit 2 is worth 30% of the final GCSE grade. For this unit, pupils will complete a piece of coursework over a period of 18 hours. Within this window, pupils will research a Welsh digital media or film company and create a distribution and exhibition plan for a new product. This is an investigation and planning task and will require the submission of a portfolio of work.

Examples of the portfolio work include, making a social media campaign or designing a website.

Unit 3 is worth 40% of the final GCSE grade. For this unit, pupils will complete a piece of coursework based on a WJEC brief. Pupils will create a marketing campaign for new film, video game or streaming series. Pupils will also complete a reflective log which is produced alongside the marketing campaign.

Pupils can be particularly creative with this piece of coursework and produce a film, script, storyboard, film marketing, website or even an extract from a YouTube short/Influencer, etc.

Music

Head of Department: Mrs. L. Phipps

This WJEC GCSE qualification is varied and exciting in content, with an emphasis on the practical enjoyment of Music. 75% of the final mark is coursework based, which takes the pressure off those pupils who do not work best under examination conditions.

Why Music?

If you enjoyed Music at Key Stage 3, then you can continue developing your knowledge and understanding. You are more likely to succeed and achieve a higher grade if you study something that you are good at and something that you enjoy. Music actually benefits other subjects too.

GCSE Music involves written, practical and social/personal skills such as:

- Independent Learning: Being disciplined about practicing your instrument or voice.
- Team Working: Being involved in weekly groups or ensembles, concerts and performances.
- Performance and Presentation Skills.
- Listening
- Analytical and Essay-Writing Skills
- Confidence and Self-Esteem: Which has a positive effect in all areas of life and learning.
- Creativity and Self-Expression.

Research has shown that Music can improve mood and encourage creativity, which helps with anxiety and self-doubt.

Where could it lead?

Studying Music can open doors to a range of different pathways:

- Music – Being a musician isn't the only career in Music. Other options include being a Sound Technician, Community Musician, Music Therapist, Teacher or Private Tutor, or a range of careers in the music industry, in a concert hall or music venue.
- The Arts/Creative Industries – This might include work in Film, TV, Theatre, Radio, Arts Administration, or Creative Education/
- In professions such as Medicine, Law, Accountancy, Music is highly regarded as an academic subject.



Music

What does the course look like?

The course has three main components:

- Performance
- Composition
- Listening and Appraising

Students will learn about a range of types of Music, including vocal, instrumental, Music for Film, Pop, Jazz and New Music.

Component 1 – Performing. (Worth 32.5% of the final GCSE grade)

You will produce recording at various stages during the course which are assessed by your music Teacher. The final assessment is in the Autumn Term of Year 11. This is completed and assessed in school, with a sample of pupils' recordings being sent to an external moderator.

Component 2 – Composing (Worth 32.5% of the final GCSE grade)

You will complete small composition tasks throughout the course (typically on GarageBand). This is completed and assessed in school with a sample of pupils' recordings sent to an external moderator.

Component 3 – Appraising (Worth 35% of the final GCSE grade)

You will study two sets works in detail:

- Set Work 1 – Palladio, Karl Jenkins
- Set Work 2 – Burn, Hamilton

You will sit a digital examination in May/June of Year 11. The exam questions will be based on extracts of music from the set work studied, and you will listen to these extracts during the exam. You will be expected to know and understand the Elements of Music and how they are used.

Throughout the course you will become used to recognising, listening and thinking analytically about different styles of music, continuously building upon these skills.

Pupils are encouraged to make use of the extensive extra-curricular activities available at Penryheol Comprehensive School, including the opportunity to receive lessons with a specialist Peripatetic Teacher.



Physical Education

Head of Department: Mr. A. N. Clapperton

Physical Education at GCSE offers a broad and balanced course, introducing comprehensive theory and concepts, whilst encouraging pupils to focus on practical activities based on their own interests, achievements and level of motivation. This qualification helps to develop confidence, communication and collaboration. Pupils will not only commit to being active, but learn how to implement a robust and healthy lifestyle, whilst building their foundational knowledge.

Why Study Physical Education?

If you are keen and enthusiastic about sport, then good results can be obtained from this qualification. You do not need to be a top performer; however you must be skillful in a range of sports, with one or two major strengths. Pupils following this course are expected to take part in extracurricular activities. By completing the GCSE course, you will apply knowledge, skills and understanding of PE through selected physical activities. It will promote an understanding of both the health benefits and risks associated with taking part in physical education. It will allow you to develop the skills necessary to analyse and improve performance and a chance to learn about the principles and practices which lead to good performance.

How will the course be taught?

You will receive five lessons per fortnight, two theory and two practical (the fifth lesson will alternate). The style of teaching will vary, depending on the topic. There will be a balance of whole class, group work and individual work. Practical work will be used to compliment the theory side of the course.

Practical Assessment	Worth 60% of the final GCSE grade (120 marks available)	March – April 2028
Learners will be assessed on two different activities as a performer – an individual activity, and/or a team activity. These two activities must be selected from an approved list within the course criteria. Learners will also be expected to produce a Personal Training Programme for one of their chosen activities.		

Written Examination	Worth 40% of the final GCSE grade 1 hour 30 minutes (80 marks available)	May – June 2028
Learners will be assessed by answering a series of both short and extended questions, relating to all five theory topics covered over the two-year course.		



BTEC Sport

Head of Department: Mr. A. N. Clapperton

BTEC Sport at Penyrheol is for learners who want to work in, or are interested in working in Sports Leadership and the Sporting Industry. It gives learners the opportunity to:

- Develop knowledge related to sport.
- Learn about aspects of sports, such as fitness for Sport and how to plan and run a sports event.
- Achieve a nationally recognised Level 2 Personal Training and Practical Sport qualification.

During this course, pupils will complete coursework to demonstrate their knowledge and skill development.

What's it all about?

This course is predominantly classroom-based, but there are some practical elements involved. Pupils will cover four areas of study, each worth 25% of the final grade. Three Units of work will be assessed by submission of coursework (totalling 75%). One Unit will be assessed with an online examination (25%). Pupils will build a portfolio of evidence over the 2-year course, demonstrating what has been learnt.

Course Breakdown:

Unit – Planning and Leading Sports Activities	25%	This Unit consists of four written assignments that will be internally assessed.
Unit – Practical Performance in Sport	25%	This Unit consists of four written assignments that will be internally assessed
Unit – Applying the Principles of Personal Training	25%	This Unit consists of four written assignments that will be both internally and externally assessed.
Unit – Fitness for Sport and Exercise	25%	This Unit will require pupils to sit an online examination, lasting 1 hour.

This course is a level 2 qualification with the following grades available:

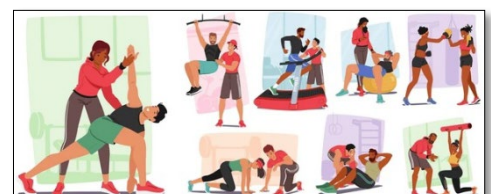
Distinction = Equivalent to 'A' Grade

Merit = Equivalent to 'B' Grade

Pass = Equivalent to 'C' Grade

Will I enjoy it? What difference will it make?

You will enjoy this course if you are interested in a career in the sporting industry. It works alongside the GCSE PE course but offers a qualification in Sport through assignment-based activities and a small exam, which can be better suited to some learners.



Hair and Beauty (BTEC)

Head of Department: Mrs. N. Finney

The Hair and Beauty course at Penyrheol will equip learners with the skills and knowledge to enter this work sector, or to continue with their studies at college. This qualification is the latest BTEC qualification available from the world-renowned exam board Pearson Edexcel. Pupils on completion of this qualification will achieve a recognised national qualification in this sector. During this course pupils will complete different coursework units to demonstrate their knowledge and skill development.

What's it all about?

In this course you will be learning about:

- Customer service in the Hair and Beauty Industry
- Nail Services
- Basic Hairdressing Techniques
- Basic Facial Treatments
- Health and Safety in Hair and Beauty
- The Hair and Beauty industry in the UK



How is the course assessed?

This course is assessed by completion of a portfolio of evidence. The course is classroom based with various practical activities so that pupils can showcase and develop their skills. By the end of the course pupils will have produced a range of different portfolios for each of the units. These portfolios can be taken with them upon completion of the course.

Will I enjoy it? What difference will it make?

You will enjoy this course if you are interested in a career in the Hair and Beauty industry. The Hair and Beauty industry in Wales adds £187 million to the Welsh economy every year. There are various Hair and Beauty courses available for further study at Gower College Swansea and Coleg Sir Gar and Llanelli, as well as a number of apprenticeship opportunities.

Hair & Beauty

Hospitality and Catering

Head of Department: Mr. M. G. Rees

WJEC Level 1/2 Vocational Award Hospitality and Catering

Do you enjoy food, cooking and trying new flavours? Ever wondered what it's really like to work in a restaurant, café or hotel — or even run your own food business one day? Hospitality & Catering gives you a real insight into one of the UK's biggest and most exciting industries. This course combines practical cooking, food knowledge and professional working skills to prepare you for real jobs and further study.

Why Choose This Course?

- A practical, career-focused subject
- Skills that lead directly to college, apprenticeships or employment
- Confidence working in both kitchen and front-of-house role
- Real-world experience of how the food and hospitality industry works

Careers Include:

- Chef or kitchen assistant
- Food technologist
- Restaurant, café or hotel manager
- Waiting staff or catering assistant
- Event and hospitality services



What Will I Study?

In Hospitality & Catering, pupils will gain a clear understanding of how the food and hospitality industry works, from small cafés to large hotels and restaurants. They will learn about health and safety, food hygiene, customer service and professional working standards, helping them understand what employers expect in real workplaces.

Pupils will also develop strong practical cooking skills, learning how to prepare, cook and present dishes to a high standard, every week. They will explore the importance of nutrition and healthy eating, understand how different cooking methods affect food, and learn how to plan balanced menus. Alongside practical work, pupils will regularly review and improve their performance — building confidence, independence and employability skills.

Assessment and Grading?

Unit 1 – Written Examination (worth 40%)

Unit 2 – Practical Coursework (worth 60%)

Level 1 – Pass / Merit / Distinction

Level 2 – Pass / Merit / Distinction / Distinction*

Health & Social Care and Childcare

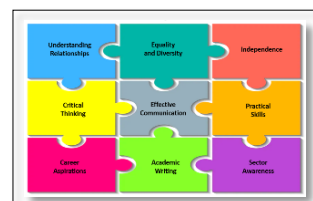
Head of Department: Mrs. N. Finney

It is estimated that 14.7% of the employed workforce in England and Wales, work in Health and Social care and this is a growing sector. The GCSE Health and Social Care and Childcare course at Penyrheol equips learners with the knowledge, understanding and skills needed to support individuals throughout the life cycle, from conception to later adulthood. Learners develop an understanding of the factors that influence human growth, development, behaviour and wellbeing. Learners will also explore the social, physical, emotional and cultural needs of people who use the care services, recognising that everyone has a unique mix of abilities and needs. The course helps learners understand how health and care services in Wales support wellbeing, enabling them to make informed decisions now and in the future.

What is it all about?

This course will help you to:

- Understand growth, development and wellbeing from childhood to adulthood
- Learn how health, social care and childcare services support people
- Explore child development, play and early intervention
- Study adult health, public health and key conditions
- Discover how professionals work, including laws, values and care practices
- Understand the importance of Welsh Language and culture in care settings



How is the Course Assessed?

Unit 1: Health and Social Care and Childcare in Wales	1 hour 30-minute Written Examination Worth 40% of the final GCSE grade	Completed in Year 10
Unit 2: Adult Health and Social Care	Non-Examination Assessment Worth 30% of the final GCSE grade	Completed in Year 11
Unit 3: Childcare	Non-Examination Assessment Worth 30% of the final GCSE grade	Completed in Year 11

Will I enjoy it? What difference will it make?

You will enjoy this course if you are interested in a future career in Health and Social Care or Childcare. This sector offers a wide range of job opportunities within organisations such as the Welsh Government, the NHS, private care providers and not-for-profit organisations. Possible careers include Pediatrician, Nurse, Midwife, Health Visitor, Occupational Therapist, Physiotherapist, Counsellor, Social Worker, Teacher, Nursery Nurse, Childminder and Teaching Assistant. There are also excellent opportunities to continue your studies at College or University. This qualification provides a strong foundation for further study in Health and Social Care & Childcare, including AS and A Level courses, as well as Level 2 and Level 3 Vocational Qualifications.

Business Studies

Head of Department: Miss. D. Kruk

GCSE Business is a new qualification that gives you a clear and practical understanding of how businesses operate and succeed in the real world. You will explore key business activities, learn how decisions are made and consider how businesses respond to challenges such as sustainability and changing markets. You will study the impact of business on society and the range of careers available in this dynamic sector.

What will you study?

The course is divided into four compulsory units that will build you knowledge and skills over two years.

Unit 1: Introduction to the Business World - You will learn the foundations of business activity, different types of enterprises, market structure and how businesses make decisions.

Unit 2: Key Business Considerations - You will undertake research of a local business and analyse their performance. From this research you will produce a detailed report.

Unit 3: Business Strategies for Success - You will study the main business functions such as finance, marketing, human resources and production, and look at how external factors influence business success.

Unit 4: Business Creation - You will develop your entrepreneurial skills by identifying an opportunity, carrying out market research and creating a business proposal for your own business idea.

Assessment:

Assessment will be a combination of written examination and coursework.

Units 1 & 3 are assessed through written examination where you will be asked questions on what you have learnt, as well as various business scenarios.

Units 2 & 4 are assessed through coursework where you are expected to research, analyse data and produce structured responses for real business tasks.



Why Study GCSE Business?

GCSE Business is an excellent choice for students who want to progress on to Vocational courses such as finance, accounting, marketing as well as A Level Business and A Level Economics. It helps you develop skills that are highly valued by employers, including decision-making, problem-solving, communication, data analysis and critical thinking. The course encourages you to think like an entrepreneur and gives you tools to plan and run your own business or work for a large organization.



Geography

Head of Department: Mrs. L. Thomas

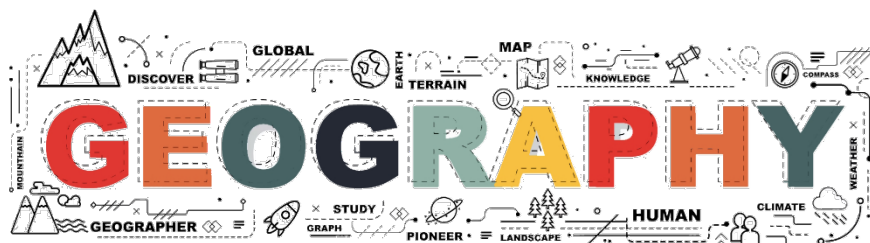
Geography is an exciting and dynamic subject that will help you understand the world around you! It is about discovering how people and places are connected and how our actions shape the planet.

Our new Geography GCSE follows the WJEC specification. This exciting new course is split into four Units of learning and pupils will be assessed through a combination of examination and non-examination tasks. The course also provides opportunities for pupils to consolidate their geographical learning through fieldwork.

Unit 1 – Our Physical Planet *(1 hour 30-minute Exam sat in Year 10. Worth 30% of final GCSE grade)*

Here you will study –

- Drainage Basins and Rivers
- Changing Coastlines
- Migration
- Settlement Change



Unit 2 – Developing Fieldwork Skills *(7 hours Non-Examination Assessment. Worth 25% of final GCSE grade)*

You will carry out a fieldwork visit based on a topic such as; Change Over Time, or Environment. You will investigate this in a chosen location and write a fieldwork enquiry that will be submitted to WJEC.

Past fieldwork trips have included locations such as, Mumbles, Gower and the Brecon Beacons.

Unit 3 – Our Dynamic and Diverse World *(1 hour 30-minute Exam sat in Year 11. Worth 30% of final GCSE grade)*

Here you will study –

- The Geography of Inequality
- The Highs and Lows of our Weather
- Wild Weather
- Continual Climate Change
- Managing Global Challenges



Unit 4 – Sustainable Solutions *(6 hours Non-Examination Assessment. Worth 15% of final GCSE grade)*

You will receive a resource booklet on a Geographical Issue and are expected to complete comprehensive research on the real-world issue. You will then complete a decisions-making task on this real-world issue and produce a report looking at the sustainability of various options in view of this issue

History

Head of Department: Dr. C. J. Rees

History is a very popular and successful option and is designed to provide pupils with a wide variety of skills essential for a range of vocations, particularly in terms of developing pupils' writing and analytical skills. All schools in Wales will deliver a new specification offered by the WJEC, which gives pupils the opportunity to study a variety of interesting and stimulating historical topics on a local, national and international scale.

The course is divided into **Four Units**:

Unit 1 – Wales in the Era of the Civil War, 1603 – 1660 *(1 hour Examination. Sat in Year 11)*

This course examines the social, political and religious changes which took place in Wales and England during this period.

Topics Include: The reign of James I and the Gunpowder Plot; the drift to Civil War and the rule of Charles I; the events and importance of the Civil War; the Commonwealth under Cromwell and the Restoration of the Monarchy in 1660.

Unit 2 – The Third Reich, c.1933 – c.1945 *(3-hour 15-minute Online Assessment. Undertaken in Year 10)*

As a background, the course briefly examines the political, social and economic impact of the First World War and the problems faced by the Weimar Republic.

Topics Include: The consolidation of the Nazi Party, 1933 – 1934; Nazi racial and social policies 1933 – 1939; religious and economic policies 1934 – 1939; the effect of the Second World War on the lives of the German people; the fall of the Third Reich and de-Nazification.

Unit 3 – The Crusades c. 1095 – c. 1291 *(1 hour Examination. Sat in Year 11)*

This course examines the medieval Crusades and how they changed and developed across the period.

Topics Include: The reasons for the First Crusade; the events and outcome of the First Crusade; the Second Crusade; the Third Crusade; developments in the later Crusades; the outcomes of the Crusades.

Unit 4 – A Changing Society *(4 hours 15 minute Non – Examined Assessment [NEA]. 20% of Qualification)*

Pupils will study a 75 – 100-year period of British History based around the following themes: Culture; Equality and Inequality; Ethnicity; International Relations; Peace and Conflict; Politics; Religion; Sex; Sexuality and Gender; Social and Economic issues.

By studying GCSE History, you will grow a better understanding of how the past has shaped the present. You will develop a wide range of skills, like analysing and making deductions from evidence, interpreting different opinions and forming balanced, reasoned judgements. These transferable skills are highly valued by Employers, Colleges and Universities with many of our former pupils going on to pursue the subject at 'A' Level and beyond. We are also proud to note that the percentage of our students achieving A* - A grades in this subject is consistently high.



Public Services (BTEC)

Head of Department: Mrs. N. Finney

This course is part of the BTEC Specialist Qualification that put learning into the context of the world of work. The course gives learners the opportunity to apply their research, skills and knowledge in relevant and realistic work contexts.

Who is it for? - This course is designed for learners who are looking to work in the community or pursue a career in a Public Sector job, such as the Fire Service, Police Force, Armed Forces, Education and Health and Social work.



What is it about? - In this course, you will be:

- Identifying, exploring and developing a range of teamwork, communication, professional and personal skills that are essential transferable across a wide range of career choices.
- Evaluating the performance of their own and the team's effectiveness and suggesting future improvements.
- Understanding a how lifestyle factors can affect personal health and fitness and participating in fitness testing.
- Examining the relationship between individuals, society and the work of uniformed organisations and community groups.
- Exploring the types of cybercrime, the vulnerabilities that are targeted and who is affected.

How is the course assessed? - There is no examination for this course. You will be assessed through a portfolio of evidence. The course is classroom based with some practical activities.

Course Title	Number Of Units
Pearson BTEC Level 2 Certificate in Teamwork and Personal Development in the Community	2
Pearson BTEC Level 2 Extended Certificate in Teamwork and Personal Development in the Community	3

Learners who are involved in additional extra-curricular activities such as Duke of Edinburgh Award, scouts or army cadets also could complete additional units to achieve a diploma (3 GCSEs).

Will I enjoy it? What difference will it make? - You will enjoy Public Services if you are interested in a career working with and for the public. Jobs range from working in the armed forces to uniformed services such as the police force and fire service. There are a range of non-uniformed roles such as social work and teaching that may interest you in the future. This course is a great route into these careers. You will not only develop a range of transferable skills, but you will also learn how to recognise your own strengths and abilities. As you will be assessed throughout the course, the work will be distributed evenly over the two years and there is no pressure of a final examination.

Religious Education

Head of Department: Mrs. H. Rees

Religious Studies is a dynamic and thought-provoking GCSE that explores the big question about life, identity and the world we live in. Far from being only about religion, WJEC GCSE Religious Studies encourages pupils to think deeply, debate confidently and form their own informed opinions on real issues that matter today. It is a subject for curious minds who enjoy discussion, challenge and discovering different ways people make sense of the world.

What Will We Be Studying?

Following the WJEC specification studied across Wales, pupils will explore Christianity, Islam and non-religious world views, while investigating contemporary issues such as human rights, justice, relationships, responsibility and identity.



How Could This Course Help Me in The Future?

The course develops essential skills in analysis, evaluation, empathy and written communication – skills highly valued in Further Education and a wide range of careers including Law, Healthcare, Education, Journalism, Politics and Social Services. Engaging, relevant and empowering, GCSE Religious Studies help pupils understand others, understand society – and better understand themselves.

Course Overview

The course is divided into four units with two pieces of NEA (coursework) and two examinations.

Year 10	Unit One – Examination worth 30% of the Final GCSE grade
	Unit One launches you into the big questions about life, meaning and belief as you explore Christianity, Islam and non-religious world views, side by side. You will discover how beliefs shape identity, values and choices, and learn how people across the world make sense of life, purpose and morality.
Year 11	Unit Two – NEA (Coursework) worth 20% of the Final GCSE grade
	Unit two brings beliefs to life as you explore real-world relationship issues through religious and non-religious viewpoints. You will investigate, debate and form your own views on modern questions about love, family and responsibility – making learning personal, relevant and powerful.
Year 11	Unit Three – Examination worth 30% of the Final GCSE grade
	Unit Three challenges you to explore right, responsibilities and identity in modern society through religious and non-religious perspectives. You will examine real ethical issues and discover how beliefs influence laws, justice and the way people live together in today's world.
Year 11	Unit Four – NEA (Coursework) worth 20% of the Final GCSE grade
	Unit four focuses on human rights and justice in the real world, allowing you to investigate powerful global issues through religious and non-religious viewpoints. You will research, evaluate and form your own opinions as you explore what it really means to live fairly, responsibly and with compassion in a modern society.

International Languages

Head of Department: Mrs. S. Wade

This is a new GCSE course that has been designed to enable learners to use their language skill in a meaningful way. Pupil will have already covered many of the topic areas during Years 7 and 8, however, this qualification provides more opportunities to speak and write in realistic settings. Pupils will continue to develop their awareness of matters such as Culture and Society, as well as be given the chance to travel to France or Spain and further build on their skills in an authentic and practical way.

What Will I study?

Pupils will learn useful and purposeful language related to:

- Leisure and Wellbeing
- Travel and Study
- Work.



How Will I Be Assessed?

This qualification is linear, with all elements assessed at the end of Year 11.

The Grades available to Pupils are A* - G.

Unit 1 – Oracy (worth 30% of final GCSE grade)	Assessment – Speaking Task This unit will be assessed with a Speaking task conducted with your teacher, one to one. Pupils will be expected to read aloud, take part in a short role-play and conversation, with a 1- minute presentation.
Unit 2 – Reading and Writing (worth 15% of final GCSE grade)	Assessment – Written Task This unit will be assessed with a piece of written coursework to be completed in class. The task will focus on a short story, film, film script or novel.
Unit 3 – Listening (worth 20% of final GCSE grade)	Assessment – Comprehension Examination This unit will be assessed with an examination where pupil's complete multiple-choice questions, as well as matching up tasks. The examination will focus on real-life scenarios such as: Festivals, Travel, Food, Sport and Shopping.
Unit 4 – Reading and Writing (worth 35% of final GCSE grade)	Assessment – Written Examination This unit will be assessed with an examination where pupils will read a series of short texts or extracts, and answer questions on the content in English. Examples of possible extracts include, a product advert or a weather forecast. Pupils will be assessed on translation.

Constructing the Built Environment

Head of Department: Mr. M. G. Rees

WJEC Level 1/2 Vocational Award Constructing the Built Environment

Do you enjoy practical work, problem-solving and seeing something you've built come to life? Have you ever wondered what it's really like to work on a building site, manage a project or design the spaces we live and work in? Constructing the Built Environment gives you a real insight into the construction industry – one of the biggest employers in Wales and the UK. This course combines hands-on practical skills with real-world knowledge about how buildings are planned, built and managed safely.

If you enjoy learning by *doing* and want a course that prepares you for real jobs, this is the perfect choice.

Why Choose This Course?

- A practical, vocational course
- Skills that lead directly to apprenticeships, college or employment
- Experience of how construction works in the real world
- Confidence using tools, materials and equipment safely

Careers Include:

- Bricklayer, carpenter or electrician
- Site supervisor or construction manager
- Architect or surveyor
- Planner, technician or project manager



What Will I Study?

During this course, pupils will develop a strong understanding of how the construction industry works, from planning through to completion. They will learn about health and safety on site, how to identify hazards and manage risk, and the importance of working professionally and responsibly in a real working environment.

Pupils will also build practical skills in areas such as brickwork, carpentry and electrical tasks. Alongside this, they will learn how construction projects are organised — using plans, schedules and costing tools, giving them a real insight into how buildings are designed, managed and delivered in the real world.

Units	Unit 1 – Safety and Security in Construction Unit 2 – Practical and Construction Skills Unit 3 – Planning Construction Projects
Assessment	Unit 1 – Written Examination (worth 40%) Unit 2 – Practical Task and Coursework (worth 30%) Unit 3 – Practical Task and Coursework (worth 30%)
Grading	Level 1 – Pass Level 2 – Pass / Merit / Distinction / Distinction*

Computer Science

Head of Department: Mrs. L. Fox

The WJEC GCSE in Computer Science will help you to make the most of the power of computers. From understanding how they work to using programming skills to create your own applications and solutions to problems in the world around you.

This course is split into 2 Units.

Unit 1, worth 50% of the final GCSE Grade	Unit 2, worth 50% of the final GCSE Grade
Digital Assessment (80 marks)	On-Screen Assessment (80 marks)
1 hour 30-minute online Exam	2 hours online Exam

Unit 1: Understanding Computer Science

This Unit will help pupils build their knowledge and understanding of practical aspects of computing such as hardware, software, systems, networks and communication. Pupils will learn how to plan, manage and deliver computer-based solutions for everyday needs/problems. Pupils will be introduced to key concepts and computational processes, learning about the legal, social, ethical, environmental and professional consequences of technology, as well as its evolution in an ever-changing world.

Key Components of Unit 1 include:

Computer Architecture –

- *Components*
- *Peripheral Devices*
- *Storage*

Structure of Systems and Functions –

- *Data Types, including Representation, Storage and Compression*
- *Data and File Structure*
- *Automated Systems*

How Systems Communicate –

- *Networks and Infrastructure*
- *Cybersecurity and Personal Privacy*

Algorithms –

- *Flow Diagrams, Pseudocode (interpret)*

Software –

- *Principals of Programming*
- *Software Development, including the Software Development Cycle (SDLC)*
- *Program Construction*

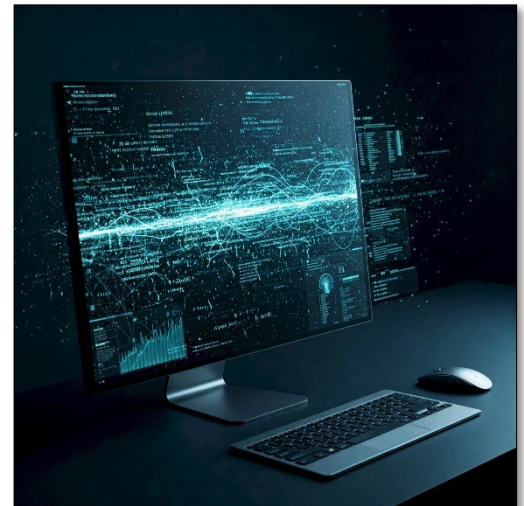
Logical Operations

Operating Systems

Systems Development Life Cycle

Ethical and Legal Aspects

- *Ethical Standards, Behaviour, Appropriate Use, Confidentiality and Legislation.*



Computer Science

Unit 2: Computer Programming (50%)

This Unit will allow pupils to explore the concept of programming and give them the opportunity to develop their own programming skills. Pupils will use these skills to find and create solutions to real-world problems. Pupils will develop programming skills using Python as the specified language, whilst learning the process of iterative problem solving and design. Pupils will also develop their use of data modelling skills, with learners having the chance to build appropriate user interfaces.

Key Components of Unit 2 include:

Investigation –

- Decomposition
- Abstraction
- Pattern Recognition

Design –

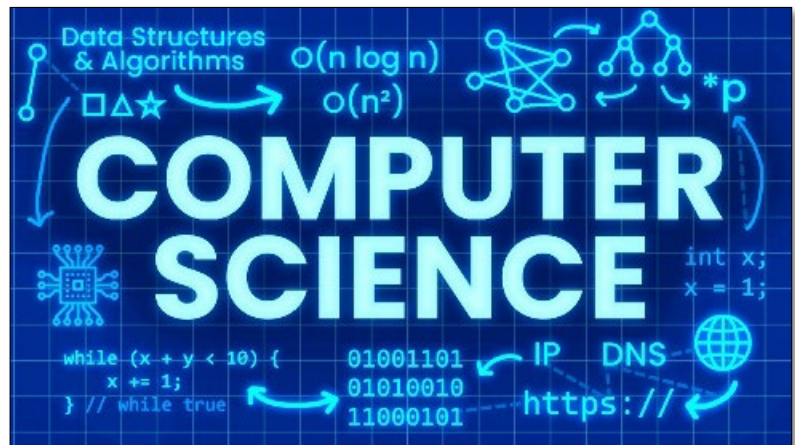
- Algorithms
- Data Modelling

Implementation –

- Programming
- User Interfaces

Testing

Refinement, including Evaluation



The materials will be released and written using the standard Python IDLE IDE and will use TKINTER Library for graphical user elements.

What skills will I develop?

GCSE Computer Science will help you to:

- Understand and apply principles and concepts of computer science
- Develop your practical programming skills
- Develop skills in computational thinking
- Analyse problems in order to develop and implement strategies to solve them
- Develop your project management skills
- Improve your logical and mathematical thinking skills
- Improve your collaboration and team-working skills
- Understand the social, professional, ethical, environmental and legal dimensions of computer-based systems

How can parents help?

Computer Sciences is a subject that requires pupils to practice and investigate new skills that they have learned, at home as well as in class. Parents can help by ensuring that pupils practice using the Python programming language. This can be downloaded and installed from the following website:

<http://www.python.org/download>. Pupils will also need to research effectively for their controlled assessments at home.



Tkinter

Digital Technology

Head of Department: Mrs. L. Fox

The WJEC GCSE course in Digital Technology (ICT) is a broad-based qualification that allows learners to build on modern digital skills that are used in the contemporary world. It provides learners with a solid foundation from which to develop their own understanding of how data is used in business planning, and how social media can be used to promote products and information. Alongside this core knowledge, pupils will acquire and develop skills such as web-site design, animation creation, game design, and video/sound editing, using a variety of exciting software packages.

This course is split into 3 Units.

Unit 1, 40%	Unit 2, 40%	Unit 3, 20%
Theory	NEA (Coursework)	NEA (Coursework)
1 hour 30-minute online Exam	20 hours in Class	10 hours in Class

Unit 1: Theory (40%)

Pupils will be introduced to a wide range of fascinating topics such as binary data, sensors, images, AR, and VR. Pupils will also learn about important historical figures in technology and the computer science industry. This Unit is taught over 2 years, with pupils assessed at the end of Year 11 with an online exam.

- 1.1 - Data
- 1.2 - Digital Technology Systems
- 1.3 - Digital Communication
- 1.4 - The Digital Shift: Work, Trade and Monetisation
- 1.5 - Securing Data and Systems
- 1.6 - Emerging and Evolving Digital Technologies

Pupils and Parents/Carers are encouraged to review pages 8-16 of the GCSE specification on the WJEC website for more in-depth information on the topics studied. <https://www.wjec.co.uk/qualifications/digital-technology-gcse>

Unit 2: Digital Practices (NEA - 40%)

This Unit will require pupils to produce a digital product, such as a game or animation, as well as design and code a website in which to present their digital product. Pupils will learn how to analyse and interpret large data sets from customer surveys in order to produce a customer demographic. They will then use this information to create their product using High-end professional software such as Adobe Animate and Game-Maker. Pupils will also use Adobe Dreamweaver to create a website alongside their digital product. This Unit must be completed during class time over a cumulative period of 20 hours.

- 2.1 – Data Management and Analysis
- 2.2 – Proposing and Designing Digital Products
- 2.3 – Implementation
- 2.4 – Testing and Evaluating Digital Products and Development Approaches



Digital Technology

Unit 3: Communicating in the Digital World (NEA – 20%)

This Unit will require pupils to plan and create a digital marketing campaign video. Pupils will first need to fully understand the underlying functions of social media platforms, as well as learn about protected characteristics covered by the Equality Act 2010. These foundational aspects will enable pupils to better promote their campaign and make effective use of the media they create. This Unit also provides a significant opportunity for pupils to develop their video and sound editing skills using the many products available in the Adobe Software Suite. This Unit must be completed during class time over a cumulative period of 10 hours.

3.1 – Digital Marketing Investigation

3.2 – Developing and Implementing a Digital Marketing Strategy

NOTE:

It is not essential for pupils to have a desktop computer or laptop of their own at home to consider this qualification. However, it will benefit pupils hugely to be able to practice their software skills outside of the classroom.

Currently, the ICT Department/School provides full access to the software used on this course and pupils with suitable devices are encouraged to download these pieces of software at home, at no extra expense.

- Adobe Creative Cloud Products
- GameMaker 2.0 – produced by YoYo Games Ltd



Where To Go for More Information?

Expressive Arts		
Art / Photography	Mrs. V. Hine	S5
Drama	Mrs. A. Williams – Sheaf	Drama Studio
Media Studies	Mrs. L. Morgan	A11 / ICT5
Music	Mrs. L. Phipps	F5
Health and Wellbeing		
Hair and Beauty	Miss. I. Davies	S4
Health and Social Care and Childcare	Mrs. N. Finney	A7
Hospitality and Catering	Mr. M. G. Rees	G2
Physical Education/BTEC Sport	Mr. A. N. Clapperton	Gym / Sports Hall
Humanities		
Business Studies / WBQ	Miss. D. Kruk	A6
Geography	Mrs. L. Thomas	S2
History	Dr. C. J. Rees	G7
Public Services	Mrs. N. Finney	A7
Religious Education	Mrs. H. Rees	S7
Languages, Literacy and Communication		
English Language and Literature	Mrs. S. Marks	A10
International Languages	Mrs. S. Wade	S1
Welsh	Mr. N. D. Binding	A1
Mathematics and Numeracy		
Mathematics and Numeracy	Mrs. K. Cavendish	F1
Science and Technology		
Computer Science / Digital Technology	Mrs. L. Fox	ICT 1
Constructing the Built Environment / D & T	Mr. M. G. Rees	G2
Science (including Triple Science)	Mrs. T. Tate	G9

Enquiries may also be directed to Deputy Headteacher, Mrs. S. Goulden,

GouldenS@hwbcymru.net

Be Prepared!

Remember

Choose subjects you **LIKE**

Choose subjects you are **GOOD** at

Choose subjects you **NEED** for any future career plans



If in doubt....

Ask your **PARENTS / CARERS**

Ask your **SUBJECT TEACHERS**

Ask your **PROGRESS AND WELLBEING LEADER**

Ask your **CAREERS OFFICER**

Ask your **DEPUTY HEADTEACHER**



“In any given moment we have two options: to step forward into growth or step back into safety”

Abraham Maslow

