

YEAR 10 & 11 Project Title – Our Environment

The GCSE specification is designed to encompass four principal areas for critical, practical and theoretical study of art, craft and design. These emphasise the qualities of analytical understanding, practical experimentation, researching and individual expression required at GCSE level. These areas are incorporated into assessment objective headings as follows:

AO1 – Contextual Understanding

- Develop their ideas through investigations informed by contextual and other sources demonstrating analytical and cultural understanding

AO2 – Creative Making

- Refine their ideas through experimenting and selecting appropriate resources, media, materials, techniques and processes

AO3 – Reflective Recording

- Record ideas, observations and insights relevant to their intentions in visual and/or other forms

AO4 – Personal Presentation

- Present a personal, informed and meaningful response demonstrating analytical and critical understanding, realising intentions and where appropriate, making connections between visual, written, oral or other elements

Unit 1 – Coursework worth 60% of their overall mark at GCSE level.

Pupils will choose a theme within ‘Our Environment’ that has strong elements of line, tone, shape, scale, structure, colour, pattern and texture. During the first year of Year 10 pupils they will produce at least 3 well presented boards based on their chosen theme. They will research information by collecting images, photographs & artist’s research, recording ideas using a range of various materials and techniques and investigating a range of artists that will influence their personal response. Pupils will annotate all work discussing processes of materials, likes/dislikes of techniques and apply written information on the artists studied. They will draw from direct observation using different themes in sketchbooks before they finally select their topic of study. A visit to Cardiff museum and Bristol Zoo will be provided focusing on natural forms where pupils can record and photograph the exhibits.

Year 11 January – April Examination

Unit 2 – Examination worth 40% of their overall mark at GCSE level. Students will be given an examination paper where they will choose one question to produce a body of work. Specified preparation time will be given as students produce at least 4 well-presented boards focusing on the same assessment objectives as coursework. Students will complete their final outcome under examination conditions where they will be allocated 10 hours to complete their final response.

GCSE ART KNOWLEDGE ORGANISER



- Artists research pages.
- Your own response in the style of the artist.
- Visit to Museum/exhibitions/ galleries.
- Explore the elements of Art.
- Annotation of your work & link to artists research.
- Use the correct Art vocabulary.



- Experiment with a range of different materials.
- Explore and experiment in 2D & 3D.
- Annotate your experiments and refine your ideas as your work progresses.



- Mind map
- Mood board with key words.
- Drawing from observation.
- Collect images from books & internet, magazines.
- Collect postcards & take photos from museums or visits.
- Annotation of artists work.



- Plans and drawings of final piece ideas.
- All boards flow into resulting to a final outcome..
- Create a final outcome that is inspired by artists research.
- Evaluation.

You will be graded on 60% coursework and 40% examination work.

A01 EXPLORE ANNOTATE

BEGIN TO LINK A THEME IMAGES TO YOUR CHOSEN ARTISTS WORK WRITTEN ANALYSIS LINK ARTISTS WORK TO IDEAS AND ARTWORK

THEME IMAGES ARTISTS RESEARCH

- Artists research pages.
- Your own response in the style of the artist.
- Visit to Museum/exhibitions/ galleries.
- Explore the elements of Art.
- Annotation of your work & link to artists research.
- Use the correct Art vocabulary.

Sketchbook



- Heading, this can be typed, stickers or a collage.
- Small photograph of what you have drawn from direct observation.
- Experimented with a range of different materials.
- Drawn in various scales.
- Add key words describing what you have drawn (elements of Art).
- Quotes or song lyrics linked to the double page.
- A small drawing of an artist that is linked to the topic. This must include the image that you have copied from.
- Written work discussing materials that you have used and likes or dislikes. This can include any challenges. Written work must be neatly written or typed, with no spelling errors.

Coursework

Coursework boards looking at artists based on selected theme. Look at mindmap created.



Mindmap



- Observation**
- Skulls
 - Shells
 - Masks
 - Natural forms
 - Fruit
 - Flowers
- Trips**
- Museum trip
 - Zoo trip
- Artists Research**
- Double pages (copy artists work & discuss.)
 - Discuss artists work using literacy resource.

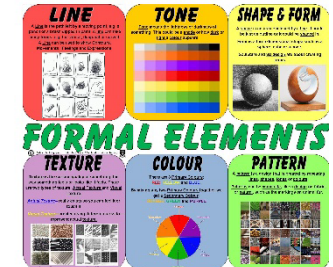
Copy artists work.



Photograph of what you are drawing (small in size)



Museum Trip



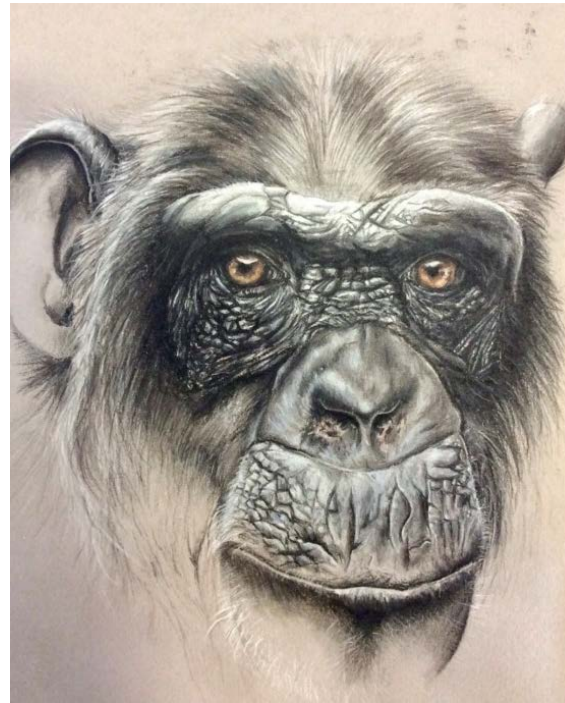
A02 EXPERIMENT WITH A RANGE OF MEDIA

LINKING TECHNIQUES TO ARTISTS AND THEMES

TEXTILES WATERCOLOUR CLAY MIXED MEDIA PHOTOGRAPHS OIL PASTEL PEN AND INK

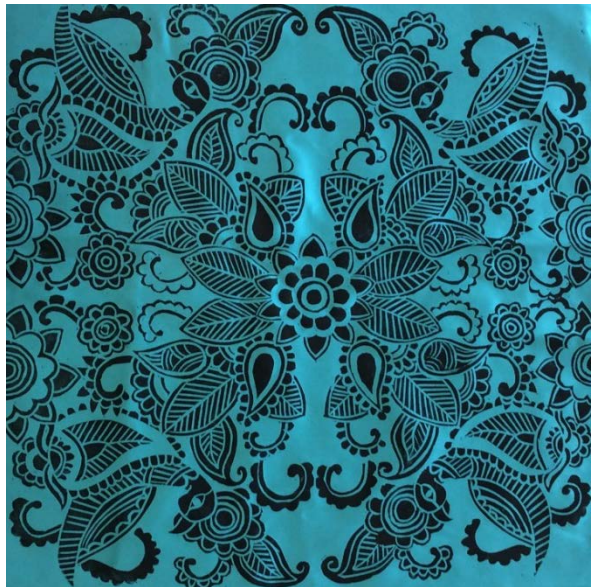
- Experiment with a range of different materials.
- Explore and experiment in 2D & 3D.
- Annotate your experiments and refine your ideas as your work progresses.

Chalks



Experiment

- Watercolour
- Acrylic
- Oil Paints
- Charcoal
- Coloured chalks
- Coloured pencils
- Clay
- Modroc
- Ink
- Coloured ink
- Press printing
- Lino printing
- Screen printing
- Photography
- Biro
- Pencil – tonal



Pen Painting



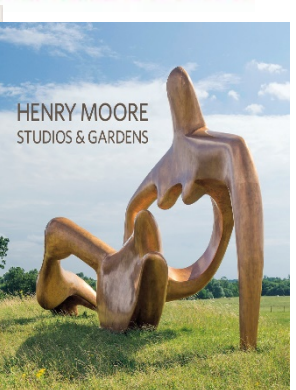
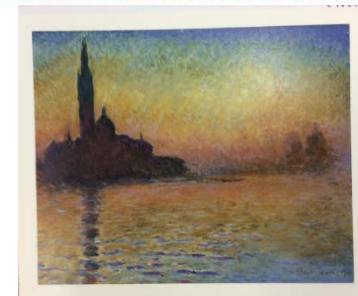
Clay

A03 IDEA

IDEAS LINKING TO ARTISTS WORK
OBSERVATION
DRAWING
ALL ARTWORK LINKING TOGETHER
PLANS, DESIGNS
IN A RANGE OF EXPLANATIONS
DIFFERENT MEDIA ANNOTATIONS

- Mind map
- Mood board with key words.
- Drawing from observation.
- Collect images from books & internet, magazines.
- Collect postcards & take photos from museums or visits.
- Annotation of artists work.

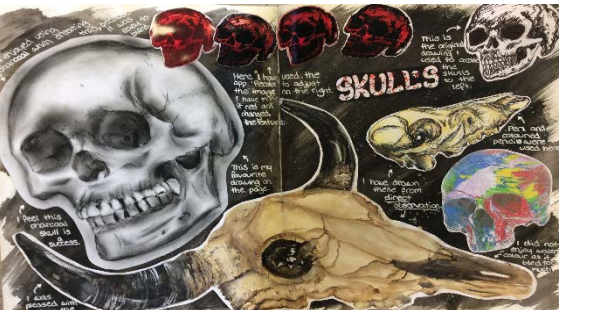
Mindmap



Postcards



Drawing from observation



Annotation-Discuss artists work.

- Produce a mindmap based on 'our environment'.
- Create a mood board with key words based on selected topic.
- Research artists via books, internet, magazines & visits to exhibitions.
- Collect leaflets, photographs, booklets to evidence where you have been.
- Discuss artists work using the worksheet provided.

- For this board I researched the topic by collecting relevant information such as
- I have chosen to investigate I chose this theme because I am interested in
- I looked at various artists related to the theme I liked this artist because
- I am really interested in I researched the topic by collecting
- I began this project by researching the topic through artist research, observational drawing and collecting various photographs based on my chosen theme.
- For this board I collected research of various photographs and artists that have studied this theme.



Internet



Magazines

AO4 FINAL

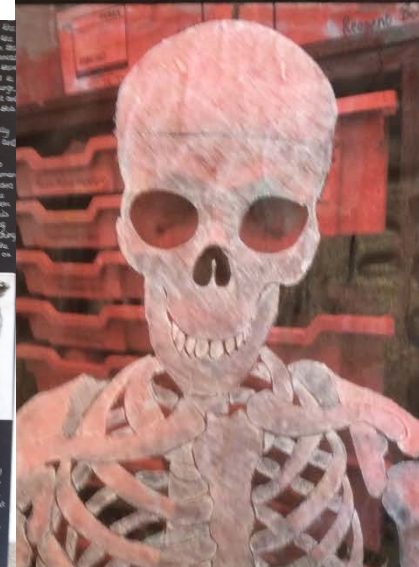
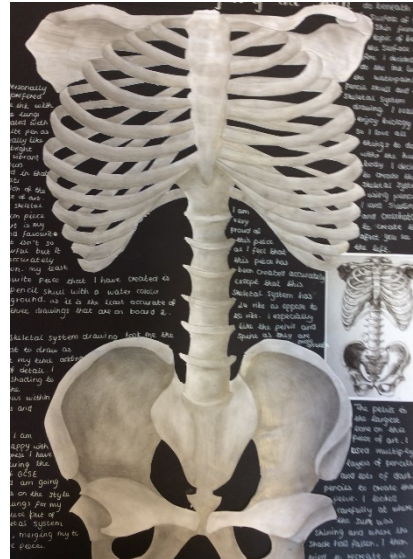
MEANINGFUL PIECE OF WORK
INFORMED SHOW UNDERSTANDING
RESPONSE LINK
LINK BETWEEN VISUALS AND ARTISTS WORK
PRESENTATION RELEVANT

- Plans and drawings of final piece ideas.
- All boards flow into resulting to a final outcome..
- Create a final outcome that is inspired by artists research.
- Evaluation.

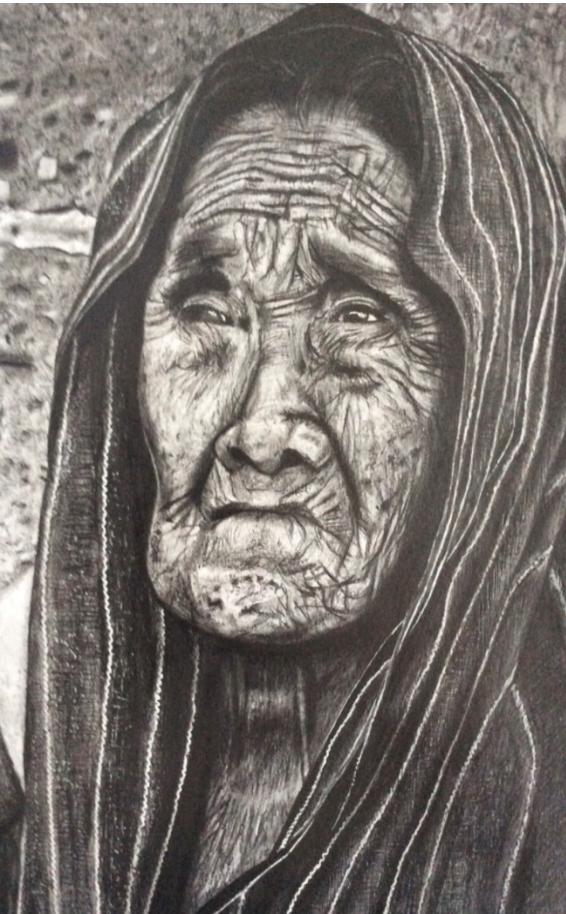
Final piece ideas example of board 3



Final pieces



different des... that I coul... potentially... create my fir... piece. my Fir... piece will be... on a flat b... canvas. I wil... recreating th... scene on the... with the ribs... and pelvis. I... again use m... coloured ink a... cover my canv... them, using u... to blend the... together more... make them... more professi... I will then sk...



ELEMENTS IN ART

LINE

Line in drawing refers to a **type of mark that contains both a direction and a length.** Line is an art element. There are numerous varieties of possible lines, including curved, bent, thick, wide, broken, vertical, horizontal, burred, or freehand.



-tone

Tone in Art is the various range of lightest to the darkest part of an **image.** Colour may be toned down and made less vivid or toned up to make it look more solid or brighter.



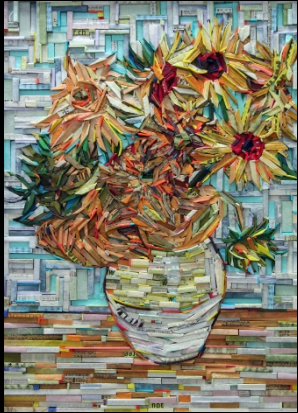
SHAPE

Most of the art we see is two-dimensional: a drawing, a painting, a print or a photograph which is usually viewed as a flat surface. Most two-dimensional art tries to create the illusion of three dimensions by combining the visual elements of Art.



TEXTURE

Textures are details that visually describe how something physically feels. **Textures** can be smooth, rough, and anything else your hand feels when it touches a surface.



PATTERN

Patterns can be found all around us. They occur in nature, in architecture, and they can also serve as an aid for creating interesting Art work.



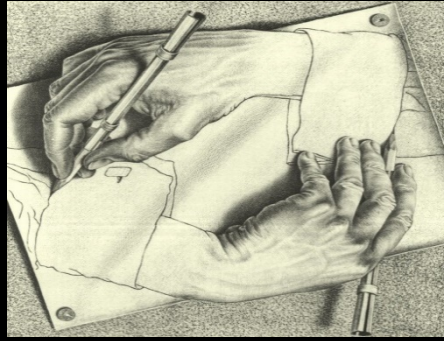
COLOUR

Colour in photography could definitely be seen as the most important factor. It can create mood, emotion, warmth, coldness and much more.



EXPERIMENTING

PENCIL



Graphite pencils for sketching and drawing are typically marked with a H, a B, or both. These abbreviations are used to indicate the hardness (H) and the blackness (B) of the pencil's graphite. The higher the B pencil the darker the pencil is.

CHARCOAL



A hard, black substance similar to coal in the form of sticks, as something to draw with. Charcoal is great for creating three-dimensional shapes that allow you to make your artwork more realistic. To add these shadows, use a rolled piece of paper or your finger to smudge and blend the charcoal.

COLOURED INK



Ink is a liquid that contains pigments or dyes and is used to colour a surface to produce an image, text, or design. Ink is used for drawing or writing with a pen, brush, reed pen, or quill.

PHOTOMONTAGE



A **photomontage** is a series of individual **photographs**. You take several **photos** of one subject and arrange them together to create a single image.

SCULPTURES



Sculpture definition is the art of carving, modelling, welding, or otherwise producing figurative or abstract works of art in three dimensions. The capacity to use this ability to create 3D shapes and forms has been recognised since ancient times.

PASTELS



Soft pastel is the most commonly used and is easily blended on the paper by smudging with a finger, soft cloth or a drawing tool such as a tortillon. Chalk can be added to soften intense colours and create a range of hues.

EXPERIMENTING

LINO PRINTING

Linocut is a printmaking technique which a sheet of Lino is used for the relief surface. A design is cut into the Lino surface with a lino cutter. The uncut areas of the lino will be the ink colour used and the cut area will remain the colour of the paper. The Lino sheet is inked with a roller, and then impressed onto paper or fabric.



SCREEN PRINTING



Screen printing is the process of transferring a stencilled design onto a flat surface using a mesh screen, ink and a squeegee. Fabric and paper are the most commonly screen-printed surfaces, but with specialised inks it's also possible to print onto wood, metal, plastic, and even glass.

STENCILING

Stencilling, in Art is a technique for reproducing designs by passing ink or paint over holes cut in cardboard or metal onto the surface to be decorated. Stencils were known in China as early as the 8th century



ACRYLIC PAINT



Acrylics were originally created to mimic oil paints but with a much faster drying time. Acrylic paint is waterproof once it has dried. Because of its versatility and the fact it dries quickly it has become a popular painting medium and is widely used by artists today.

WATERCOLOUR

Watercolours are coloured paints which you apply with a wet brush or dissolve in water first. Once a colour of paint has dried, you can add layers of watercolour to create dimension, texture and colour variation.



OIL PAINTING

Oil paint is a type of slow-drying paint that consists of particles of pigment suspended in a drying oil, commonly linseed oil. The advantage of the slow-drying quality of oil paint is that an **artist can develop a painting gradually, making changes or corrections if necessary.**

